

HENRY DUNCAN WEAVER

HIS LIFE, HIS ART

1896 - 1955

Original Database by E. Martin Shaeffer III 1996
Re-editing by E.C. Weaver Shaeffer
2012

Part 1. Landscapes



HDW0253.jpg -- 1946 -- 30 x 24 -- Oil -- Chicago Forest Preserve
The Forest Preserves in and around the city of Chicago were always pleasant,
summer and winter.
In possession of Michelle Weaver Root.



Above left: Photo from which the previous painting was taken. Jane is in the red snowsuit. Above right: Photo the same day with the family: (L_R) Margaret, Jane, E.C., Duncan. (Gary may have taken this photo.) The photos were taken about 1945 or 1946.

HDW0062.jpg

About 1942

20 x 24 -- Chalk
Landscape,
possibly a local Illinois
scene.

In possession of Cindy
Toronto Glasscock.



HDW0160.jpg

About 1935

16 x 20 -- Watercolor

This may have been a quick
field sketch.

In possession Michelle
Weaver Root.



HDW0168.jpg

1938

28 x 30 -- Oil

The Sacred Grove

Compare to HDW0143.jpg.
These paintings of the
Sacred Grove in Palmyra,
NY were painted on site
when Duncan and family
visited the place of the
Prophet Joseph Smith's
First Vision.

In possession of Michelle
W. Root.



HDW0143.jpg 1938 -- 24 x 30

Oil - The Sacred Grove

A letter that accompanied this painting read: "*April 17, 1938, to [Dr.] Ariel L. Williams, In account with H. D. Weaver: One oil painting 24 1/4 x 30 1/4, framed, being a representation of the Sacred Grove. Ordered on the spot, sketched by the artist and duly painted at leisure; containing various and lasting colors on genuine canvas. Presented in the payment of the following for which value was received to wit: one sore ass and one sore thumb and a belly-button on the bum, (it still is) and office calls and calls out home, and a trip back east. And now from scratch we start again, if you are willing. H.D.W.*"

In possession of Hannah Mae W. Crum, Washougal, WA





HDW0004.jpg and HDW0222.jpg 1926 – a tiny pair of watercolors
5 x 7 -- These were done prior to Duncan's arrival in Chicago.
In the possession of E. C. Shaeffer.



HDW0174.jpg About 1938 -- 24 x 18 -- Watercolor
Fence & Farm

Barbed wire fences full of tumble weeds are a common sight to New Mexico residents! Duncan would have loved the comparison of southern Alberta to eastern New Mexico.
In the possession of Michelle Weaver Root.



HDW0221.jpg About 1926 -- 18 x 14 -- Watercolor
This is an early rendition of Old Chief Mountain in southern
Alberta, Canada.
In possession of Amy Toronto Weir.



HDW0258.jpg About 1926 -- 18 x 24 -- Chalk
A preliminary rendition of the oil painting to follow:
(HDW0269.jpg) Old Chief Mountain in southern Alberta, Canada .

In possession of Michelle Weaver Root.



HDW0269.jpg About 1926 -- 18 x 24 -- Oil on canvas -- badly damaged: Old Chief Mountain in southern Alberta, Canada.

In possession of Michelle Weaver Root.



HDW0298.jpg About 1926 -- 18 x 24 -- Framed oil on canvas -
- photo, presumably taken by the artist, is badly faded: Old Chief
Mountain in southern Alberta, Canada.
In possession of unknown person.

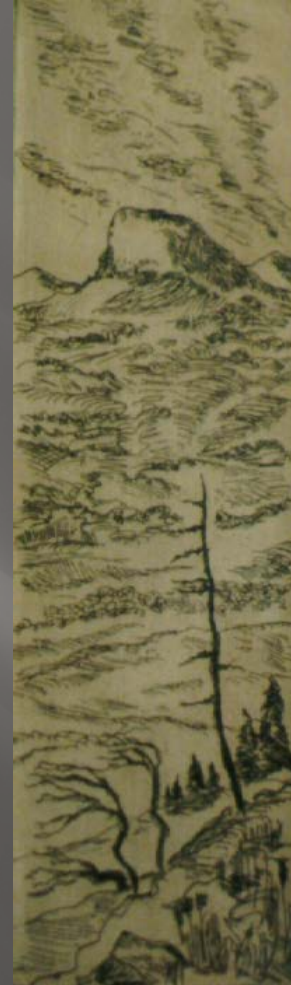
HDW0088.jpg

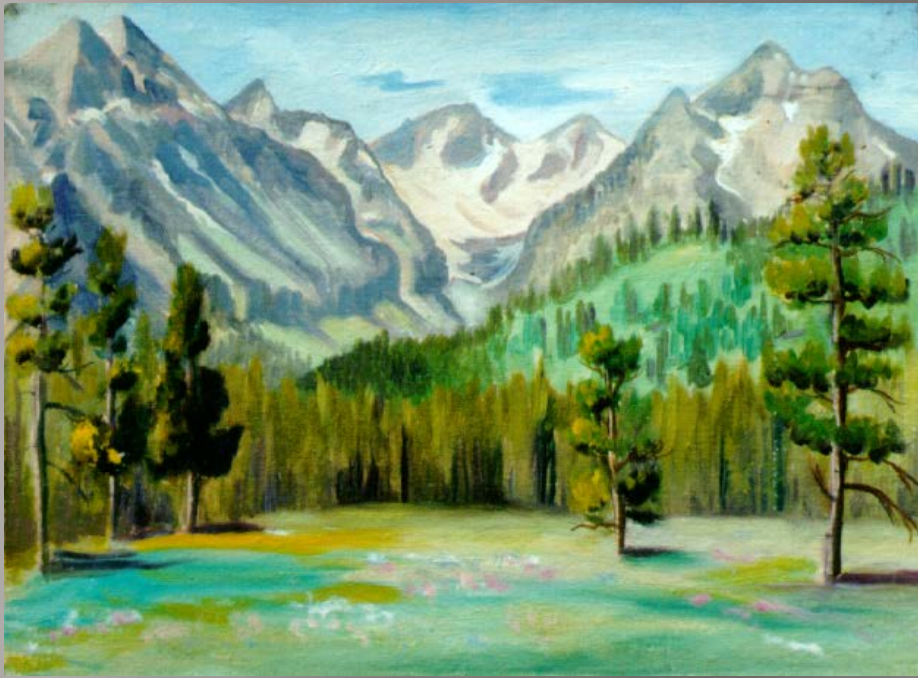
About 1950

Tiny 2 x 6 Etching of Old Chief Mountain.

Duncan made several copies of this etching done in Japanese style. Old Chief Mountain in Alberta, near the town of Cardston, was a favorite subject for Duncan's endeavors.

E. C. Shaeffer has a copy, as do others.





HDW0206.jpg 1950 -- 16 x 20 -- Oil -- The Tetons
This field painting, unfinished, nevertheless is an excellent composition of shapes, design and color.
In possession of E. C. Shaeffer.



HDW0194.jpg 1950 -- 16 x 11 -- Oil - Tetons
Another field study, similar but not identical to HDW0206.jpg, the
previous slide.
In possession of E. C. Shaeffer.



HDW0263.jpg 1932 -- 8 x 12 -- Watercolor -- Banff, Alberta, Canada.

This painting is of Mt. Rundle in Banff National Park, Alberta, Canada.
In the possession of Hannah Mae Williams Crum, Washougal, WA



HDW0189.jpg 1946 -- 8 x 10 -- Watercolor -- Des Plaines River
The lovely Des Plaines River, not far distant from the Weaver's home in Chicago was protected in its natural beauty by a Forest Preserve on either side.
In possession of E. C. Shaeffer.



HDW0295.jpg Unknown date and size -- It appears to be an oil painting. Subject could be the lovely Des Plaines River. This faded photo taken by the artist is the only indication of this work. It's location is unknown.



HDW0197.jpg Abt. 1938 -- 24 x 14 -- Watercolor -- Canada
A bit unusual, this watercolor was done on canvas, not watercolor
paper.
In possession of E. C. Shaeffer.



HDW0252.jpg and HDW0182.jpg Abt. 1938 Both are small 8 x 10 watercolors of Canadian scenes, possible Banff. The little landscape on the right was so badly damaged that it was trimmed and framed. In possession of E. C. Shaeffer.



HDW0195.jpg Abt. 1938 -- 17 x 13 -- Watercolor -- Canada
This field study later was the model for a larger oil painting, though the location of the oil is unknown.
In possession of E. C. Shaeffer.



HDW0196.jpg Abt. 1938 -- 17 x 13 -- Watercolor -- Canada
Duncan's coloration of the stream looked unnatural to one who was used to seeing the Colorado streams. However, when one actually sees the water of the Canadian Rockies, it was noted that the water color was exactly as he painted it! The turquoise is glacial melt.
In possession of E. C. Shaeffer.



HDW0291.jpg Unknown size and date -- Original could be oil or tempera paint. The only documentation of this work is this photo. The original may have been sold or given away. Note similarities to previous slide.



HDW0240.jpg 1951 -- 24 x 16 -- Watercolor, possibly Canada
In possession of Jo Ellen Shaeffer



HDW0270.jpg 24 x 18

Watercolor

Compare to HDW0285.jpg. They are of the same subject matter, but may be different paintings.

In possession of Naomi B. Weaver Christofferson.



HDW0285jpg Unknown date -- 24 x 18 -- Watercolor or tempera
Compare to HDW0270.jpg. They are of the same subject matter, but
may be different paintings. Note the fading of the original slide.
In possession of Naomi B. Weaver Christofferson.



HDW0299.jpg Unknown date -- 24 x 18 -- Watercolor or tempera
Compare to HDW0270.jpg. They are of the same subject matter, but
may be different paintings. Note the fading of the original slide. This
photo was taken of a framed painting, the location of which is
unknown. It was likely sold, though there is no record indicating such.



HDW0284.jpg Unknown size and date -- Watercolor
This photo was taken of a framed painting, the location of which is unknown. It was likely sold, though there is no record indicating such.



HDW0273.jpg 1950 -- 16 x 12 -- Oil -- Teton Mountains of Wyoming. This is one in a series of oils done in the Teton Mountains of Wyoming.

In the possession of J. Duncan Shaeffer.

.



HDW0275.jpg 1950 -- 16 x 12 -- Oil -- Teton Mountains of Wyoming

One in a series of oils done in the Teton Mountains of Wyoming.
In the possession of J. Duncan Shaeffer.

.



HDW0248.jpg 1950 -- 16 x 12 -- Oil -- Teton Mountains of Wyoming --The meadow and stream in the foreground are a welcome contrast to the rugged Teton peaks.

In possession of Naomi B. Weaver Christofferson.

.



HDW0274.jpg 1950 -- 16 x 12 -- Oil -- Teton Mountains of Wyoming -- One in a series of oils done in the Teton Mountains of Wyoming.

In the possession of J. Duncan Shaeffer.

.



HDW0199.jpg 1950 -- 16 x 11 -- Oil -- Teton Mountains of Wyoming -- Duncan did several paintings of this same scene. In possession of E. C. Shaeffer.

.



HDW0250.jpg 1950 -- 16 x 11 -- Oil -- Teton Mountains of Wyoming -- Duncan Weaver made several paintings of this same scene.

In possession of Naomi B. Weaver Christofferson.

.



HDW0190jpg 1950 -- 10 x 14 -- Oil -- Teton Mountains of Wyoming -- This little oil is one of E.C.'s favorites.
In possession of E. C. Shaeffer.

.



HDW0249jpg 1950 -- 16 x 12 -- Oil -- The French explorers named these mountains in Wyoming. The highest peak, the Grand Teton is 13,776 feet in elevation.

In possession of Naomi B. Weaver Christofferson.

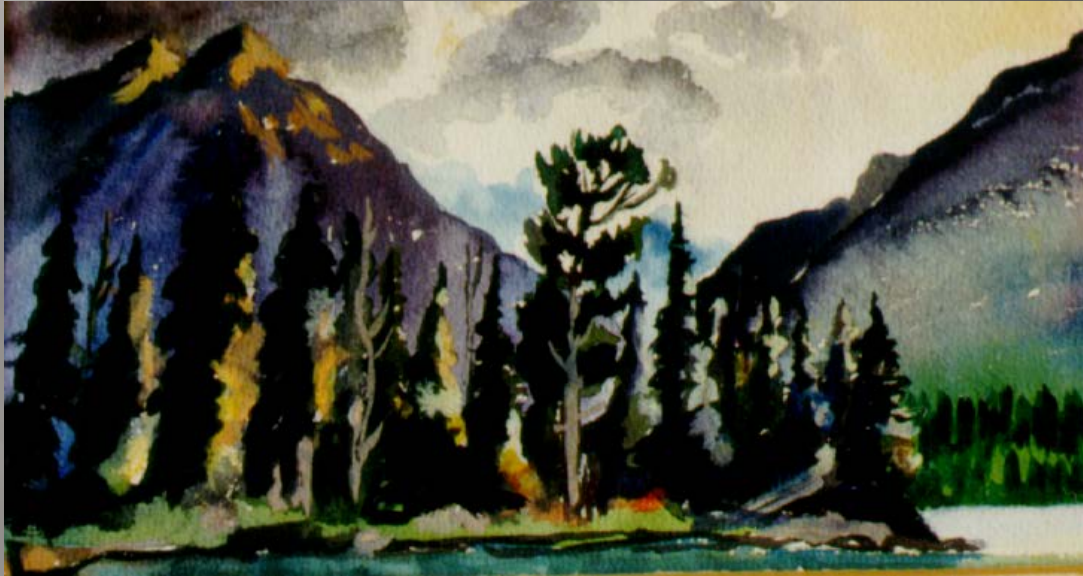


HDW0251jpg 1950 -- 16 x 12 -- Oil -- The Teton Mountains of Wyoming. This painting is Mt. Moran.
In the possession of Naomi B. Weaver Christofferson.



HDW0173.jpg 1950 -- 16 x 11 -- Oil -- Landscape - Tetons
Another field study, similar but not identical to HDW0206.jpg.
In possession of Carolyn Toronto Burrup

.



HDW0192jpg 1938 -- 10 x 14 --

Watercolor

Another field study. The fading light of day is reflected just on the tips of the peaks and on the trees of the foreground.

In possession of Michelle Weaver Root.

HDW0057.jpg

1950

11 x 16 -- Oil

Field study
Teton Mountain, Wyoming

In possession of Shaeffer
family.





HDW0255.jpg 1949 -- 30 x 24 -- Large Oil Colorado stream -
Duncan and family visited the Garden of the Gods in Colorado, 1947.
In possession of Michelle Weaver Root.



HDW0338.jpg 1949 -- 28 x 24 -- chalk field study. Compare to next slide done in oil of the same (almost) scene. In possession of Jo Ellen Shaeffer.



HDW0262.jpg 1948 -- 36 x 24 -- Oil - Compare to previous slide done in chalk of the same (almost) scene. In possession of Michelle Weaver Root.



HDW0239.jpg Abt. 1947 -- 36 x 24 -- Oil
Compare with HDW0293.jpg. This is from a current photo, whereas the
photo HDW0293, which follows, is faded.
In possession of Jo Ellen Shaeffer.



HDW0293.jpg Abt. 1947 -- 36 x 24 -- Oil
Compare with HDW0239.jpg. This is from an old photo, quite faded.
The quality of photography had improved but it does not protect
against damage to the original (foreground - previous slide), which
likely happened in one of the Shaeffers many moves..
In possession of Michelle Weaver Root.



HDW0241.jpg date unknown -- 18 x 13 -- Watercolor --
This was a quick field study for the painting in the previous two slides.

In possession of Jo Ellen Shaeffer.



HDW0245.jpg 1950 -- 16 x 12 -- Watercolor -- This was a quick field study in the Teton Mountains.
In possession of Michelle Weaver Root.



HDW001.jpg ; HDW002.jpg; HDW003.jpg. Art school : Three tiny 3 x 5 miniature watercolor washes with landscape in relief. In possession of E. C. Shaeffer.

HDW0149.jpg

Early, About 1925

16 x 20 -- Oil

Likely a scene in Alberta,
Canada.

In possession of Kay
Weaver Ferrin.



HDW0075.jpg

Early, About 1925

18 x 24 -- Watercolor
Unfinished

In possession of E. C.
Shaeffer.

One could imagine that the
unfinished figure is the
ghost of the artist! 😊😊



HDW0026.jpg

Early, About 1925

12 x 16 -- Watercolor
Unfinished

In possession of E. C.
Shaeffer.



HDW0105.jpg

1947 -- 24 x 30 -- oil
Bryce Canyon

On our "Days of '47" trip to the west, we traveled to the canyons of Utah and Arizona. When Duncan saw the marvelous lighting behind this tree, we stopped and lowered him on a rope so he could photograph this wonderful old tree. What an exciting event for me, an eleven-year-old! (ECS)
He later painted this work from the photo.

In possession of Amy
Toronto Weir.



HDW0297.jpg

Unknown date

Unknown size

It appears to be watercolor

The only documentation of this painting is this faded photo taken by the artist. The painting may have been sold or given away.

.



HDW0300.jpg

Unknown date

Unknown size

It appears to be watercolor.

The only documentation of this painting is this faded photo taken by the artist. The painting may have been sold or given away.

Subject matter could be one of the many lakes not far from the city of Chicago.



HDW0296.jpg

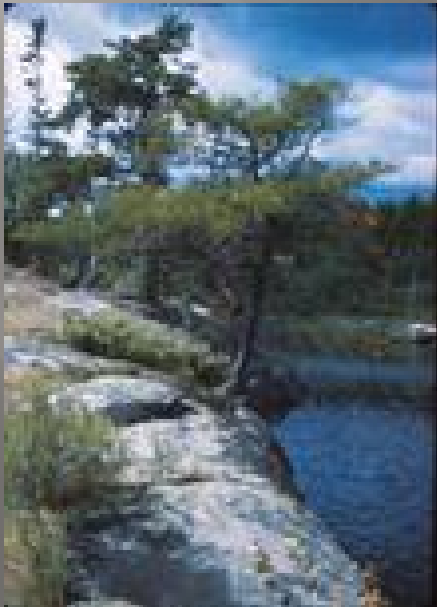
Unknown date

Unknown size

It appears to be watercolor

The only documentation of this painting is this faded photo taken by the artist. The painting may have been sold or given away.

Subject matter is the North Woods of northern Minnesota from the artist's 1946 trip, as per snapshot from the trip:





HDW0289.jpg Unknown size and date -- Watercolor -- The only documentation of this work is this photo. The original may have been given or sold to the Nichols family who accompanied the Weaver on their 1946 trip to the North Woods of northern Minnesota, which is the subject of this work of art, as per snapshot of the scene.

HDW0301.jpg

Unknown date.

Unknown size.

It appears to be watercolor.

The only documentation of this painting is this faded photo taken by the artist. The painting may have been sold or given away.

Subject matter could be one of the local forest preserves around the city of Chicago.





Scan_Pic0001.jpg date unknown -- -- Watercolor --
Probably the Teton Mountains of Wyoming. In possession of
Naomi Weaver Christofferson.



Scan_Pic0002.jpg date unknown -- -- Watercolor --
Probably the North Woods in northern Minnesota. In possession
of Naomi Weaver Christofferson.

Part 2. Seascapes
& Townscapes



HDW0261.jpg 1953 -- 24 x 18 -- Watercolor Seascape
This preliminary painting in watercolor was for a commissioned oil painting of the same scene done from a photograph, possibly for Mr. Groom, the Steinmetz High School orchestra instructor, who commissioned this work. The photo had been taken while on the high seas. The oil painting has not been located.
In the possession of Naomi B. Weaver Christofferson.

HDW0082.jpg

About 1931

8 x 10 -- A sweet little
watercolor - possibly the
Belmont Avenue Harbor,
Chicago.

In possession E.C. Shaeffer



HDW0104.jpg

About 1931

12 x 17

Pencil work seascape --

In possession of E.C. Shaeffer for
Will Toronto.

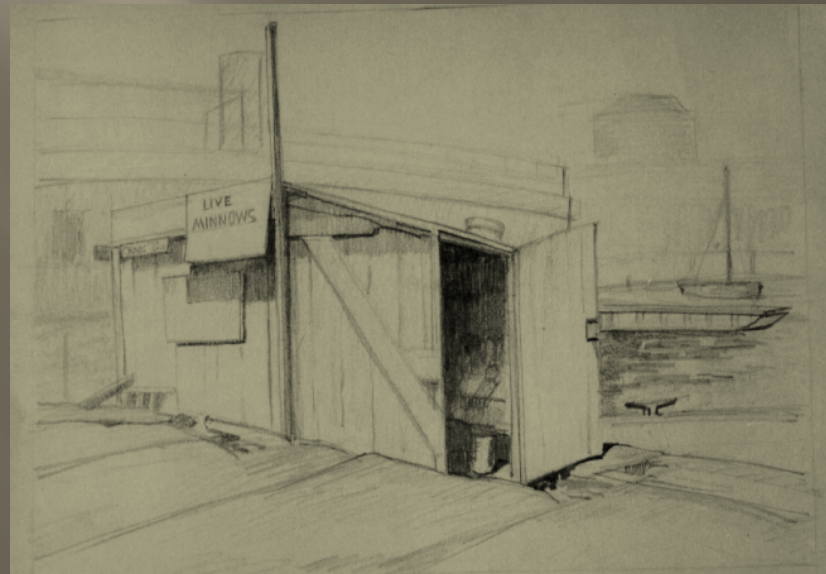


HDW0136.jpg and HDW0178.jpg

About 1930

Two small pencil sketches.

In possession Amy Toronto Weir.





HDW0246.jpg 1939? -- 24 x 20 -- Oil

Early oil of the Chicago River.

It would be interesting to try to identify the buildings in the painting.

In possession of Michelle Weaver Root.

HDW0095.jpg

About 1931

9x 12 -- Pencil

Chicago River

In possession of E. C. Shaeffer

Jo Ellen Shaeffer also has a
similar landscape of the Chicago
River, HDW0335.jpg.



HDW0335.jpg

About 1931

9x 12 -- Pencil

Chicago River

In possession Jo Ellen Shaeffer

See also previous slide -- similar
landscape of the Chicago River,
HDW0095.jpg.



HDW0059.jpg

1935 -- 18 x 24

Watercolor on very
heavily textured
paper.

In possession of
Michelle Weaver
Root family.



HDW0133.jpg

1935 -- 18 x 24

Watercolor.

In possession of
Carolynn Toronto
Burrup family.



HDW0111.jpg

1935 -- 14 x 18 -- Oil
on canvas

In possession of E. C
Shaeffer,

Hung as a pair with the
following painting:



HDW0112.jpg

1935 -- 14 x 18 -- Oil
on canvas

In possession of E. C
Shaeffer,

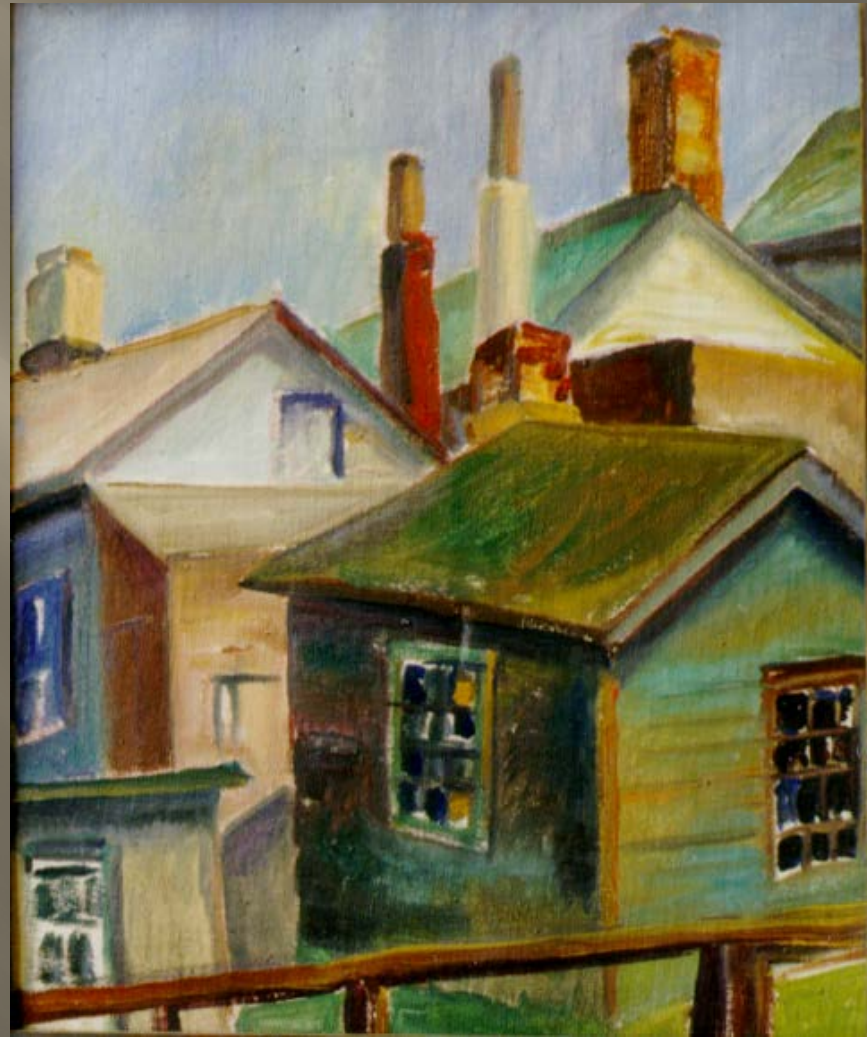
Hung as a pair with the
previous painting:



HDW0145.jpg

1935 -- 14 x 16 -- Oil
on canvas : Backyards of
Chicago.

In possession of Michelle
Weaver Root.





HDW0254.jpg 1935 -- 18 x 14 -- Oil: Backyards of Chicago
In possession of Michelle Weaver Root.

HDW0078.jpg

1931 -- 16 x 20 Pencil
This old house at the
corner of Western Ave. and
Milwaukee Ave. in
Chicago, was probably
demolished shortly after
this sketch, as it was
replaced long ago with
other buildings. In
possession of Amy T. Weir.



HDW0077.jpg

1931 -- 16 x 20 Pencil

Using the broad side of the pencil this sketch of a garage was typical of the neighborhood in which the Weaver lived.

In possession of Carolynn Toronto Burrup family.





HDW0259.jpg 1931 -- 20 x 16 -- Pencil: from photo or imagination, or perhaps an actual place.
In possession of Michelle Weaver Root.



HDW0257.jpg 1928 -- 18 x 14 -- Oil:
Grain elevators in Alberta, Canada.
In possession of John and Ann Weaver.



HDW0271.jpg 1928 -- 20 x 14 -- Oil in the Van Gogh style;
Alberta Temple of the Church of Jesus Christ of Latter-day Saints,
Cardston, Alberta, Canada.
In possession of Michelle Weaver Root.

Part 3. Portraits

HDW0281.jpg

Unknown size and date

Unknown model

The pre-1950 photo of this work of art is the only record known of this work.

In possession of Michelle Weaver Root.



HDW0279.jpg

Unknown size and date

Unknown model

The pre-1950 photo of this work of art is the only record known of this work.

The photo included a frame, so this work may have been a commission.

Whereabouts unknown.



HDW0171.jpg

About 1948

Charcoal

18 x 23

Unknown model.

In possession of E. Martin Shaeffer III



HDW0107.jpg

About 1946

Pencil

18 x 23

Unknown model.

In possession of E.C. Shaeffer



HDW0006.jpg

Unknown date

Watercolor or tempera

18 x 24

Unknown model. This appears to be a preliminary for an oil portrait.

In possession of Carolynn Toronto Burrup family.



HDW0008.jpg

1935

Pencil

18 x 24

Duncan Weaver's grandmother,
Jane Wardrop Duncan Collett.

In possession of E. C. Shaeffer



HDW0010.jpg

1935

Pencil

12 x 16

This damaged pencil portrait may have been one of Duncan's relatives in Canada.

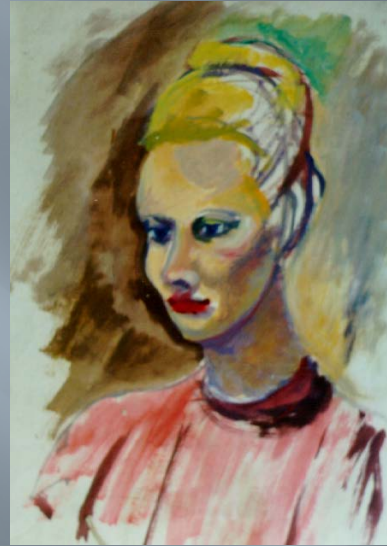
Alternatively, it may have been an art school model.

In possession of Amy Toronto Weir family.



HDW0018.jpg
HDW0099.jpg

1947
Tempera
12 x 16



And
1947
Oil "Olga"
Also 12 x 16

In possession of Amy Toronto Weir.



HDW0101.jpg

HDW0102.jpg

1948

Oil 16 x 20

In possession of Toronto family.



1948

Tempera

12 x 16

In possession of Amy Toronto Weir.



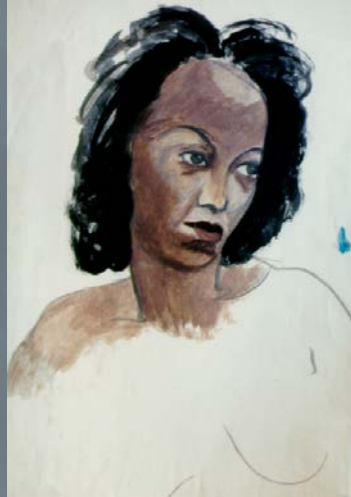
These “quick” studies were for an art class.

HDW0097.jpg
and
HDW0019;0020.jpg

1948
Oil 18 x 24
In possession of E. C.
Shaeffer



1948
Two Tempera preliminary
sketches 12 x 16
In possession of E.C.
Shaeffer



For Duncan's figure
drawing class.



HDW0288.jpg

Unknown date

Unknown size

Unknown medium

The only record of this work is this faded photo, taken by the artist about 1950.

Whereabouts of original are unknown.



HDW0162.jpg

About 1948

16 x 20

Oil

This appears to be an unfinished work.

In possession of Michelle Weaver Root.



HDW0161.jpg

About 1948

16 x 20

Tempera paint

An interesting face, this appears to be a preliminary for an oil.

In possession of Michelle Weaver Root.





HDW0193.jpg

About 1948 - 30 x 24

Although this appears to be an unfinished work, it is a good example of design shapes with contrasting background elements.

In possession of E. C. Shaeffer

HDW0093.jpg

About 1932

18 x 21

Chalk

Duncan took a class in “The Costumed Figure” in 1932 at the Art Institute of Chicago. This appears to be the same model as in the previous slide.

In possession of E. C. Shaeffer



HDW0356.jpg

About 1948

18 x 20

Oil

This interesting face is of
an unknown model.
Duncan framed it in red
bamboo.

In possession of E. C.
Shaeffer



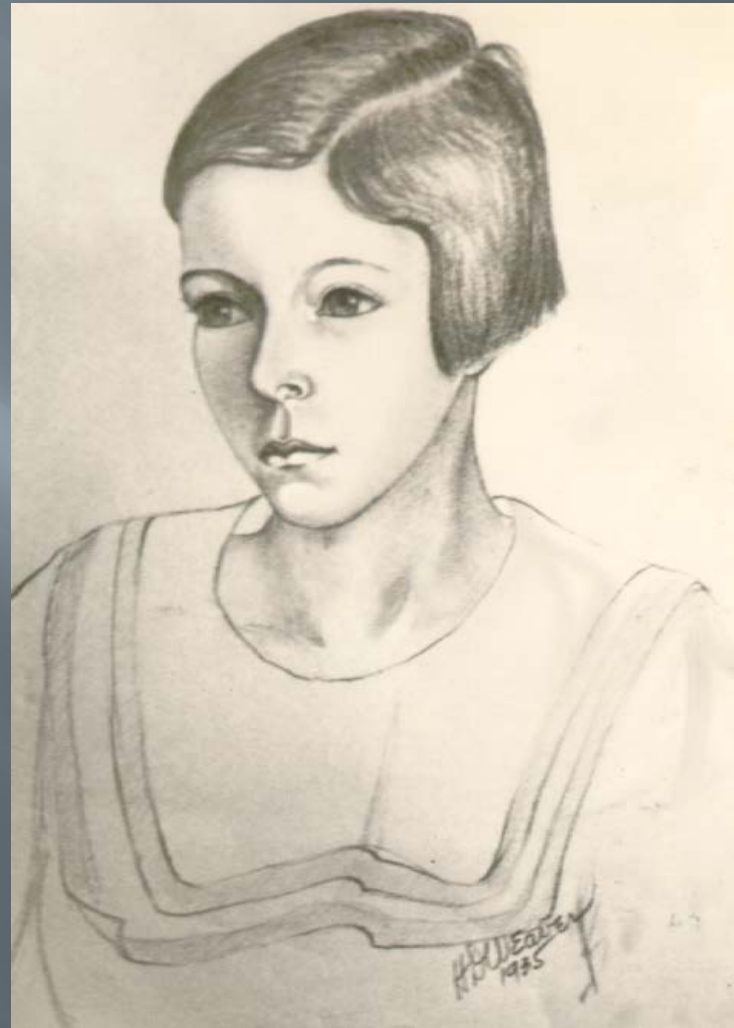
HDW0327.jpg

1935

Pencil

This pencil drawing may have been one of Duncan's nieces in Canada.

In possession of E. C. Shaeffer



HDW0011.jpg

About 1948

18 x 24 Charcoal

For Life Drawing class

In possession of E. C.
Shaeffer



HDW0016.jpg

About 1948

18 x 24 Charcoal

For Life Drawing class

In possession of E. C.
Shaeffer



HDW0163.jpg

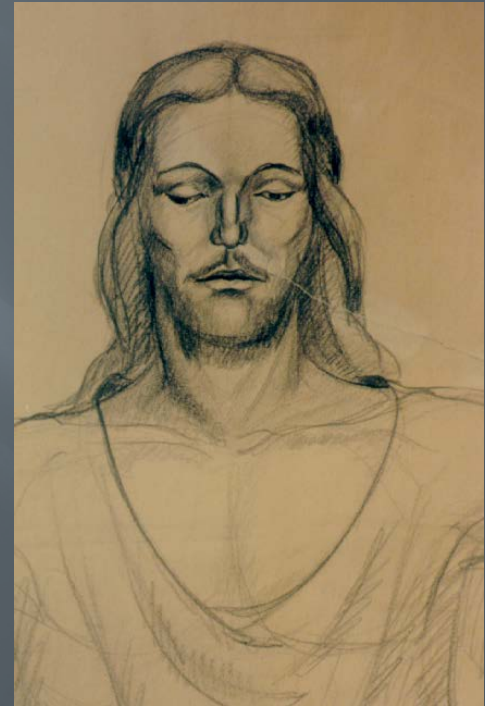
HDW0167.jpg

1935

16 x 18 pencil sketches

For a Sunday School class

In possession of E. C.
Shaeffer



HDW0005.jpg

About 1932

18 x 20 Oil



HDW0007.jpg

About 1932

14 x 18 Watercolor

Early attempts at different
media; subject: son Gary

In possession of Michelle
Weaver Root.



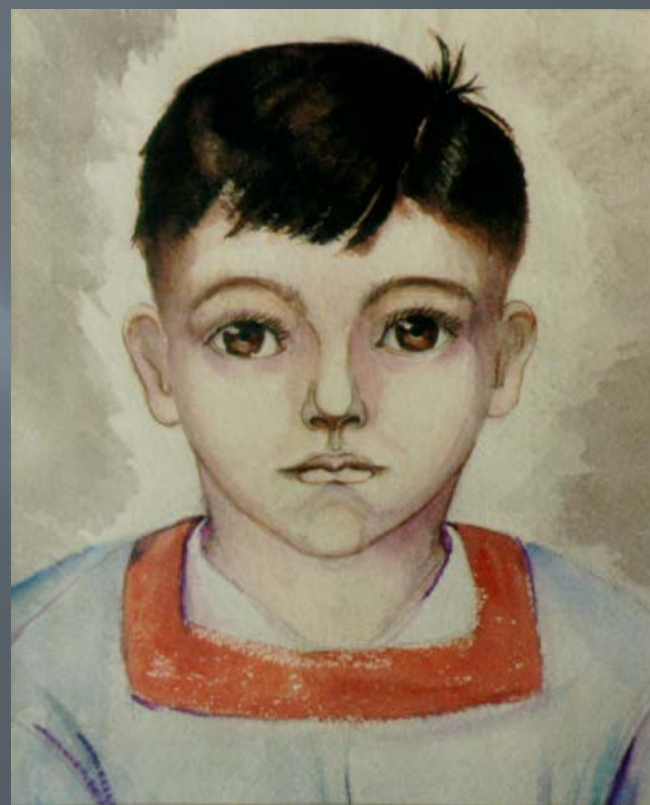
HDW0150.jpg
About 1931
14 x 18 Watercolor
Charming baby Gary



And
HDW0151.jpg
About 1935
14 x 18 Watercolor

This may be a stylized
version of the famous
painting of the young Jesus,
only the model in this case
was Gary, about age five.

In possession of Michelle
Weaver Root.



HDW0156.jpg

About 1947

16 x 20

Oil

Son Gary, about 17 years
of age. Whereabouts of
painting unknown.



HDW0098.jpg

About 1947

15 x 18

Oil

Daughter, Ellen Claire,
"E.C." dressed as a pirate,
with background from
photo of the North
Woods.



HDW0017.jpg

1938 -- Pencil

Daughter Ellen Claire,

"E.C." age 2.



HDW0349.jpg

Jan. 22, 1944

The day after her birthday

At age 8.

9 x 7 -- Pencil



HDW0144.jpg

About 1944

18 x 24

Charcoal

Here Ellen Claire is holding the doll, "Elizabeth," one of a pair of dolls made by Margaret with faces painted by Duncan for their two daughters, E.C. and Jane.

In possession of Jo Ellen Shaeffer.



HDW0350.jpg

About 1949

16 x 20

Pen and ink portrait of
daughter Jane.

As kids we had a big box
full of old dress-up clothes
to play with. The costume
Jane is wearing here is a
blue taffeta of unknown
vintage. It was her
favorite dress-up outfit.

In possession of Amy
Toronto Weir.



HDW0083.jpg

About 1952

24 x 30

Chalk portrait of daughter
Jane as a young teenager.

Did Duncan have a
premonition regarding
Jane's shortened life?
Here she appears in white
with the radiance of
"eternity" behind her.

In possession of Carolynn
Toronto Burrup.



HDW0091.jpg

1949

18 x 24 -- Oil

Duncan painted this portrait of his wife, Margaret, in 1949. She was too busy to sit for the painting, so he took a photo of her, and he actually painted from the slide projection.

In possession of
Cindy Toronto
Glasscock.



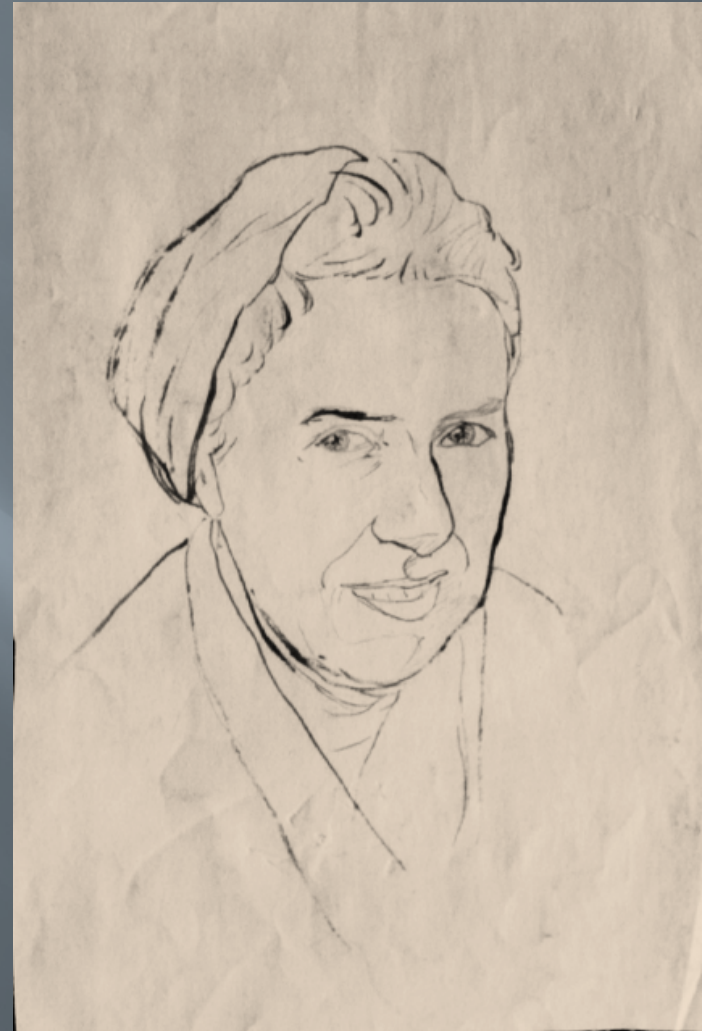
HDW0081.jpg

1945

8 x 10 Pen & ink

This quick pen & ink on newsprint was taken from a photo of Margaret and Duncan and the two girls during the winter of about 1945.

In possession of E.C. Shaeffer



HDW0080.jpg

1948

Class in Primitive
Art

7 x 10 Pencil

Self Portrait

Note the distortion
of the nose and eyes.
(See chapter on
Primitive Art)

In possession of
E. C. Shaeffer



- Two more self-portraits:
- HDW0331.jpg
- About 1946
- Still life in tempera with mirror image of artist in background
- In possession of Daniel W. Shaeffer



HDW0072.jpg
8 x 10 Etching

This rather pensive self-portrait does not accurately reflect the usually sunny, though reflective disposition of the artist.

In possession of E. C. Shaeffer

HDW0009.jpg

About 1949

18 x 24

Pen and ink

Beryl Jensen Smiley

This quick pen & ink sketch of Beryl captured quite a good likeness. She lived with the Weaver family in Chicago when she came from Orem, Utah to study music. She has had a remarkable career in music. She and her husband live in Salt Lake City, Utah.



IMG_0002.jpg

1947 -- Oil

Portrait of the artist's
grandmother, Jane
Owens Wardrop
Duncan Collett.

In possession of
Don Duncan, of
Trabuca Canyon, CA





Painted especially for
Mrs. Matt. C. Boidges
of 826 Pajaro Street,
Salinas California,
in deep appreciation
of her devotion and
unselfishness to her
mother and to her
mothers family.

Christmas time always
brought its remembrance
from Aunt Minnie.

May this picture express
my "merry Christmas"
to her for all the
goodness of the years
she brought to me.

Henry D. Weaver
6612 Milrose St
Chicago 34, Ill

Dec. 20th 1947

Part 4. Still Life



HDW0169.jpg 1934-5 Still life -- Oil on canvas

In possession of Kay Weaver Ferrin.



HDW0201.jpg 1934-5 Still life -- Oil on canvas --
18 X 14

In possession of Toronto family.

HDW0170.jpg

1934-5 Still life

Oil on canvas --

18 X 14

In possession of Kay W. Ferrin.



HDW0169.jpg

1930-1935 Still life

Oil on canvas --

18 X 14

In possession of Kay W. Ferrin.



HDW0113.jpg

1930-1935 Still life

Oil on canvas --

18 X 14

In possession of Carolynn Toronto
Burrup.



HDW0146.jpg

1930-1935 Still life

Oil on canvas --

18 X 14

In possession of Jo Ellen Shaeffer.



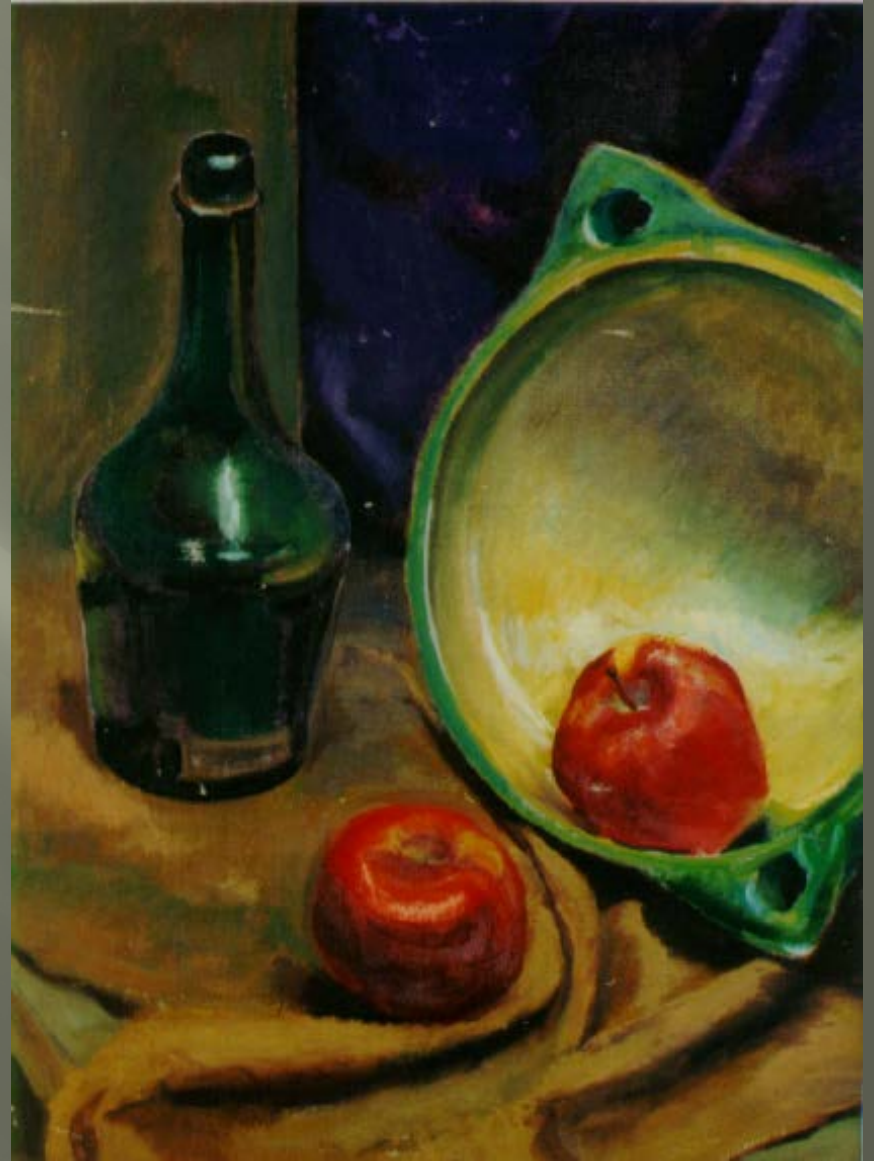
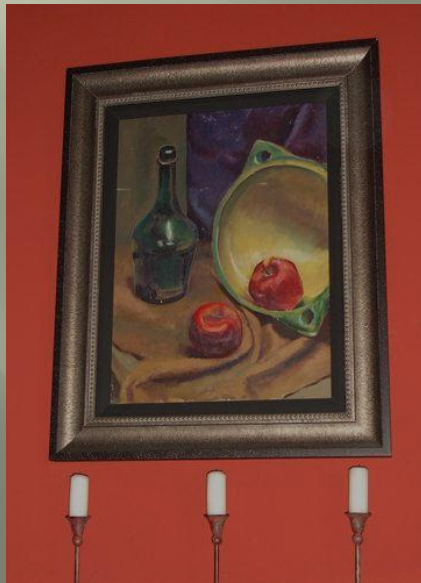
HDW0089.jpg

1944 Still life

Oil on canvas

18 X 14

In possession of E. C. Shaeffer.





HDW0186.jpg -- 1938 -- 30 x 24 -- Oil on canvas
In possession of E.C. Shaeffer; this was the favorite
painting of Margaret Weaver.



Same as previous slide. Note varying camera qualities and properties.



HDW0185.jpg -- 1931 -- 20 x 17 -- Watercolor
In possession of E.C. Shaeffer. The unique "from above"
perspective is interesting.



HDW0218.jpg -- 1931 -- 8 x 9 -- Watercolor
In possession of E.C. Shaeffer. This diminutive work looks
great with a dark matting.



HDW0191.jpg -- 1935 -- 18 x 14 -- Oil on canvas
In possession of E.C. Shaeffer.



HDW0200.jpg -- 1935 -- 18 x 14 -- Oil on canvas
In possession of Cindy Toronto Glasscock family.



HDW0187.jpg -- 1935 -- 17 x 10 -- Watercolor
In possession of Al & Suzy Toronto for Carolyn Toronto
Burrup.



HDW0198.jpg -- 1931 -- 22 x 15 -- Watercolor
In possession of E. C. Shaeffer.



HDW0175.jpg -- 1931 -- 8 x 9 1/2 -- Watercolor
In possession of Cindy Toronto Glasscock & family.



HDW0188.jpg -- 1931 -- 23 x 18 -- Watercolor
In possession of E. C. Shaeffer.

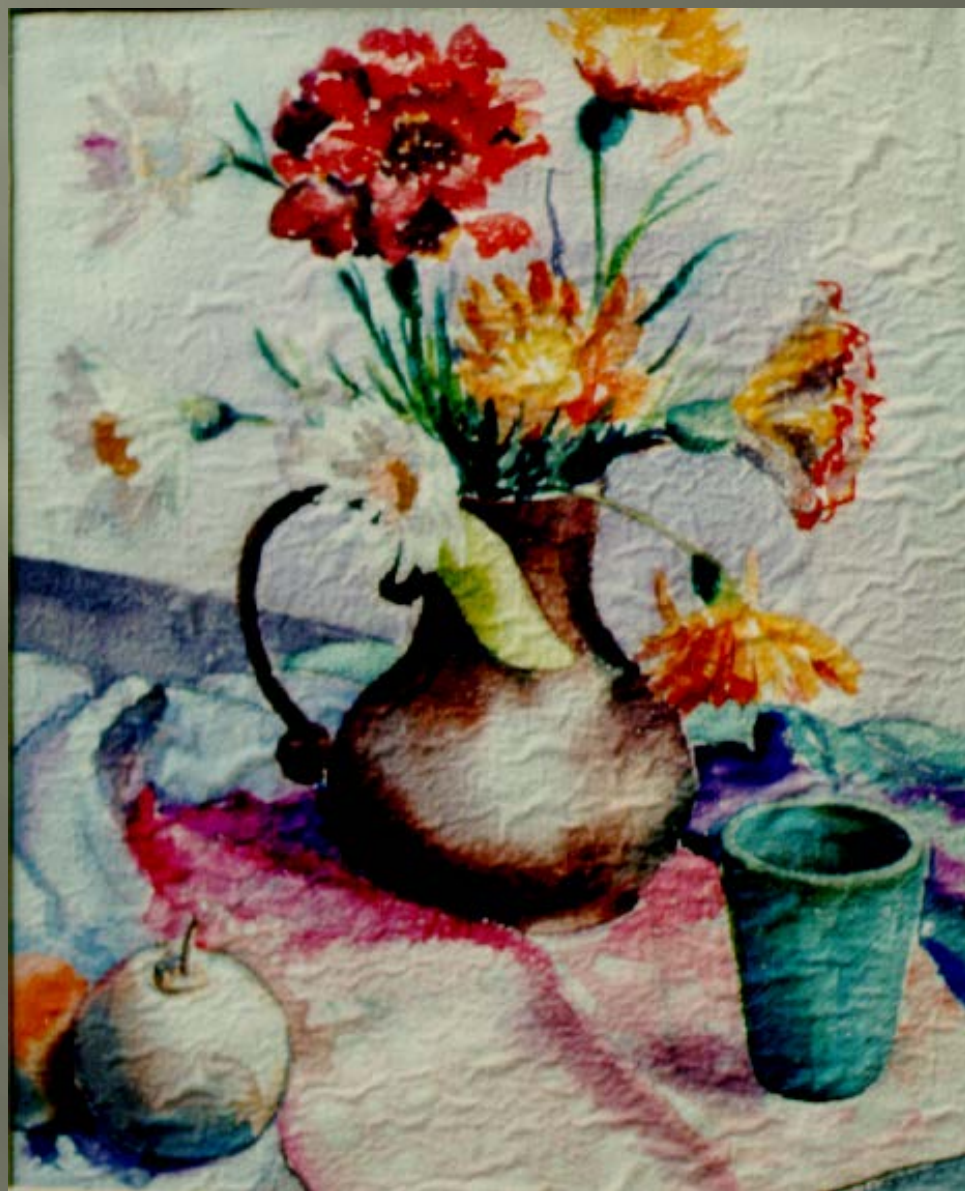
HDW0132.jpg

1930-1935 Still life

Watercolor --

16 X 20

In possession of Carolynn
Toronto Burrup.



HDW0021.jpg

1930-1931 Still life

Watercolor --

8 X 9

In possession of Amy
Toronto Weir family.





HDW0022.jpg HDW0023.jpg-- 1931 -- 8 1/2 x 11 --
Watercolor -- Hung as a pair.
In possession of E. C. Shaeffer.



HDW0049.jpg HDW0050jpg-- 1931 -- 8 x 12 -- Ink;
Hung as a pair.
In possession of E. C. Shaeffer.

HDW0090.jpg

1931 Still life

Watercolor --

15 X 20

In possession of E. C. Shaeffer.



HDW0090.jpg

1949 Still life

Watercolor --

15 X 19

In possession of Amy Toronto
Weir.



HDW0067.jpg

1931 Still life

Watercolor --

8 X 11

In possession of E. C. Shaeffer.





HDW0210.jpg -- 1931 -- 13 x 10 -- Watercolor
In possession of E. C. Shaeffer.



Previous artwork scanned and made into tile backsplash
in the kitchen of Marty and E.C. Shaeffer, Las Cruces, NM



HDW0267.jpg -- 1931 -- 18 x 24 -- Watercolor
In possession of Michelle Weaver Root family.

HDW0159.jpg

1946 Still life

Tempera --

18 X 20

In possession of Michelle
Weaver Root family.



HDW0152.jpg

1949 Still life

Tempera --

18 X 24

In possession of Naomi Weaver
Christofferson.



HDW0154.jpg

1949 Still life

Tempera --

18 X 24

In possession of Michelle
Weaver Root family.





HDW0242.jpg -- 1931 -- 18 x 16 --- Tempera
In possession of Michelle Weaver Root family.

HDW0148.jpg

1935 Still life

Tempera --

16 X 20

In possession of Kay Ferrin.



HDW0147.jpg

1935 Still life

Tempera --

20 X 24

In possession of Kay Ferrin.



HDW0110.jpg

1935 Still life

Tempera --

16 X 20

In possession of Daniel Shaeffer
family.



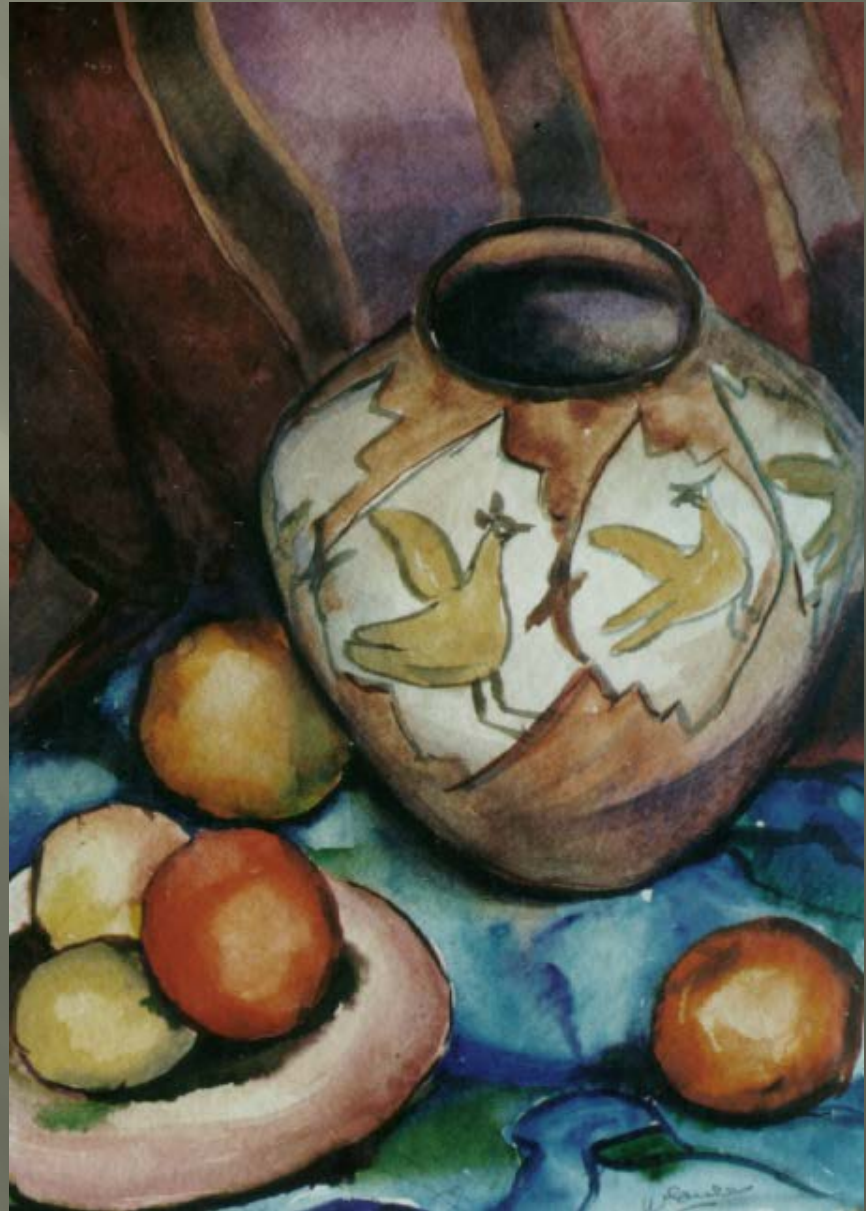
HDW0024.jpg

1935 Still life

Tempera --

16 X 20

In possession of Amy T. Weir.



HDW0058.jpg

1935 Still life

Tempera --

16 X 20

In possession of Cindy Toronto
Glasscock.



HDW0056.jpg

1935 Still life

Tempera --

16 X 20

In possession of Amy T. Weir.



HDW0109.jpg

1944 Still life

Tempera --

16 X 20

In possession of J. Duncan
Shaeffer.



HDW0025.jpg

19334 Still life

Tempera --

16 X 20

In possession of Amy T. Weir





HDW0243.jpg -- 1931 -- 20 x 16 - Tempera --
In possession of Michelle Weaver Root family.



HDW0280.jpg -- Nothing is know about this watercolor.
It may have been sold. Photo appears to be faded.

HDW0283.jpg

Photo taken by artist.
Whereabouts of painting
are unknown.



HDW0290.jpg

Photo taken by artist.
Whereabouts of painting
are unknown.



HDW0294.jpg

Photo taken by artist.
Whereabouts of painting
are unknown.



HDW0286.jpg

Photo taken by artist.
In possession of Cindy T.
Glasscock.



HDW0278.jpg

Photo taken by artist.
Whereabouts of painting
are unknown.



HDW0000.jpg

Photo taken by artist.
In possession of Daniel
Weaver Shaeffer.



HDW0358.jpg

Photo taken through glass.
Painting in possession of
Michelle Weaver Root family.



Part 5. Figure Drawing & Painting

HDW0140.jpg

“Sketches from
plates in *The Child in
Nature*, London,
1922.”

“Research for
composition”

Student: Weaver

Instructor:
Blacksheare





**HDW0230.jpg -- 1933 -- 24 x 20 -- Red chalk on newsprint
In possession of Amy Toronto Weir.**

HDW0126.jpg

1929

20 x 24 -- Charcoal

"This is the first life drawing I ever did."

July 1929, Chicago Academy of Fine Arts, later renamed the Art Institute of Chicago.

In Duncan Weaver art scrapbook.





HDW 0129.jpg and HDW0130.jpg

Possibly 1929-30 -- 8 x 20 -- pencil drawings in cubism

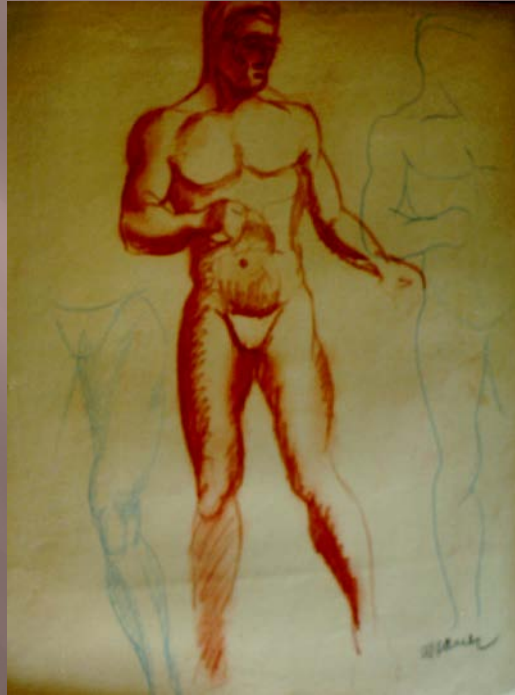
In possession of E. C. Shaeffer.



HDW0047.jpg

About 1933 -- 11 x 14 splatter technique with ink

In possession of E. C. Shaeffer



HDW0015.jpg -- 12 x 16 -- Charcoal
HDW0123.jpg -- 20 x 24 -- Red chalk
HDW0122.jpg -- 18 x 24 -- Charcoal
Originals in Duncan Weaver art scrapbook.



HDW0036.jpg -- 18 x 24 -- Charcoal

HDW0040.jpg -- 18 x 24 -- Charcoal



HDW0037.jpg -- 20 x 24 -- Pencil

HDW0035.jpg -- 20 x 24 -- Pencil



HDW0013.jpg -- 18 x 24 -- Charcoal

HDW0117.jpg -- 18 x 24 -- Charcoal



HDW0063.jpg -- 8 x 12 -- Watercolor

HDW0119.jpg -- 20 x 24 -- Red chalk

HDW0124.jpg

1935

20 x 24 -- Red chalk

In possession of Jo
Ellen Shaeffer.



HDW0038.jpg

HDW0039.jpg

1935

Each= 18 x 24
In the
possession of
Amy Toronto
Weir.



HDW0034.jpg

HDW0041.jpg

1935

Each= 18 x 24

In possession
of ?





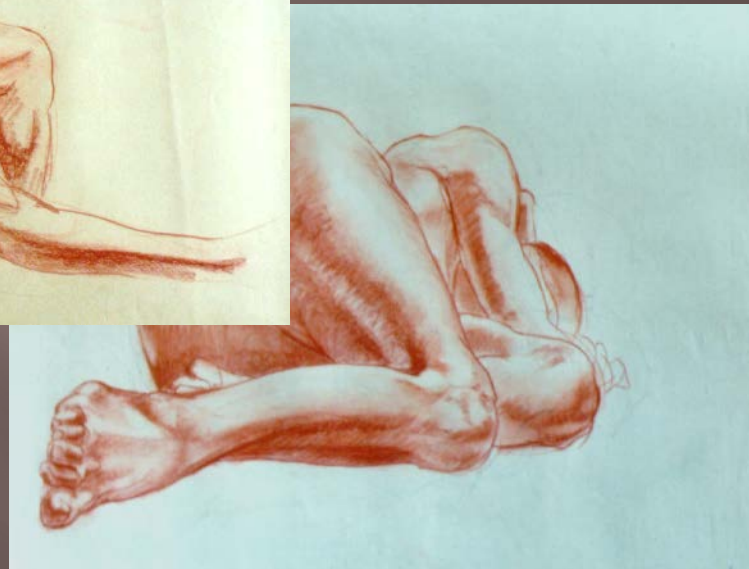
HDW0202.jpg -- 18 x 24 -- Red chalk -- This reclining nude is the "Pregnant Goddess" or "Fertility Goddess" similar to ones found on the Magdalenian cave walls near Tarn, France. The digitless hands and feet are symbolically distant from real women who walk, gather, and work with their hands. The red ochre, or color of earth pigment symbolizes blood, or the life force. The reclining posture portrays the birth-giving position. See *The Language of the Goddess: Unearthing the Hidden Symbols of Western Civilization*, by Marija Gimbutas; Harper & Row, 1989.



**HDW0180.jpg -- 18 x 24 -- Red chalk
In possession of Amy Toronto Weir.**



HDW0033.jpg -- 16 x 20 -- Red chalk
In possession of ?



HDW0204.jpg -- 18 x 24 -- Red chalk

HDW0205.jpg -- 18 x 24 -- Red chalk

HDW0064.jpg

8 x 14

**Pencil, ink
With tempera
highlights**

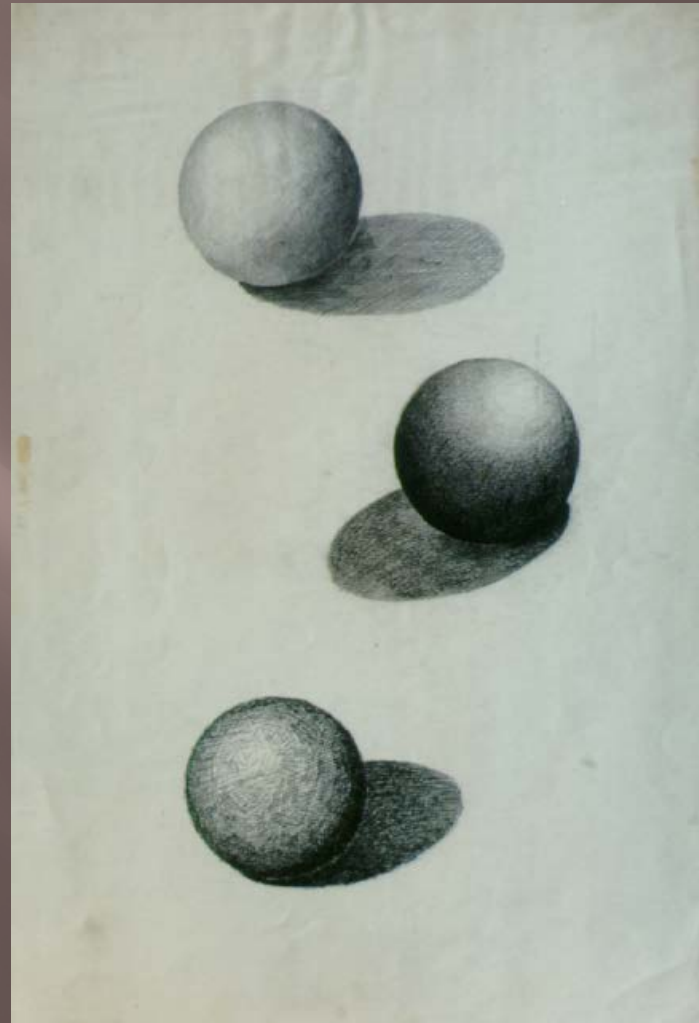
**In possession of
Amy T. Weir**

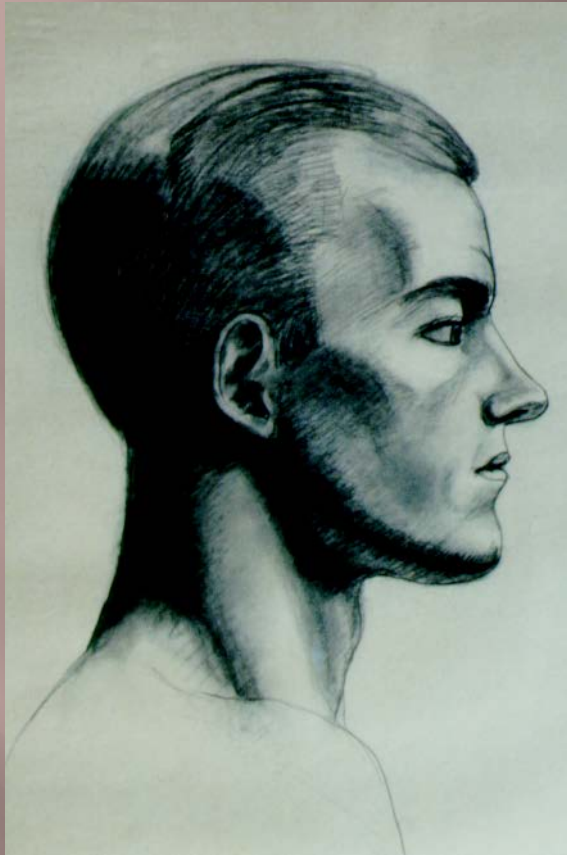


HDW0045.jpg

18 x 24

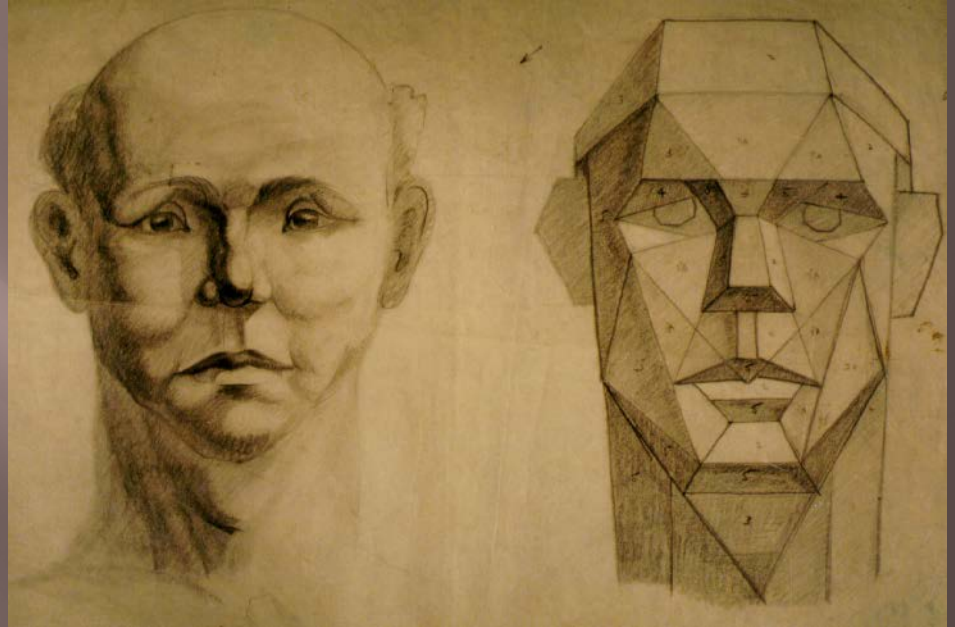
Pencil





HDW0012.jpg -- 18 x 24 -- Charcoal - In possession of Jo Ellen Shaeffer.

HDW0131.jpg -- 18 x 24 -- Charcoal - in possession of Amy Toronto Weir.



HDW0065.jpg -- 18 x 24 -- Pencil - in possession of ?

HDW0177.jpg -- 18 x 24 -- Pencil - in possession of Carolynn T. Burrup



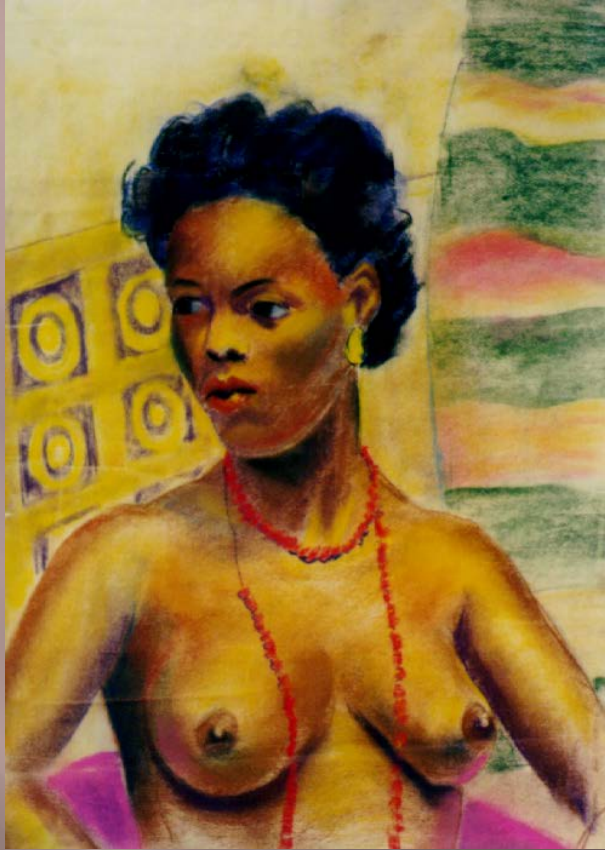
HDW0116.jpg -- 18 x 14 -- Chalk

HDW0118.jpg -- 18 x 14 -- Chalk



HDW0268.jpg -- 18 x 24 -- Chalk

In the possession of the Michelle Weaver Root family.



HDW0166.jpg -- 18 x 24 -- Chalk preliminary

HDW0108.jpg -- 18 x 24 -- Chalk

In the possession of E. C. Shaeffer

HDW0106.jpg

20 x 24

Oil on canvas,
Quite damaged.

In possession of
E. C. Shaeffer.





HDW0128.jpg -- 16 x 20 -- Chalk

HDW0125.jpg -- 16 x 20 -- Chalk

In the possession of E. C. Shaeffer.



HDW0127.jpg -- 16 x 20 -- Charcoal & chalk
Located in Duncan Weaver art scrapbook.



HDW0219.jpg -- 16 x 24 -- Oil on canvas
In the possession of E.C. Shaeffer

HDW0219.jpg

16 x 24 --

Oil on canvas

In the possession of
E.C. Shaeffer

The previous
painting has a chalk
preliminary hung
directly below it on
our wall. I think I
actually like the
preliminary better
than the formal oil.



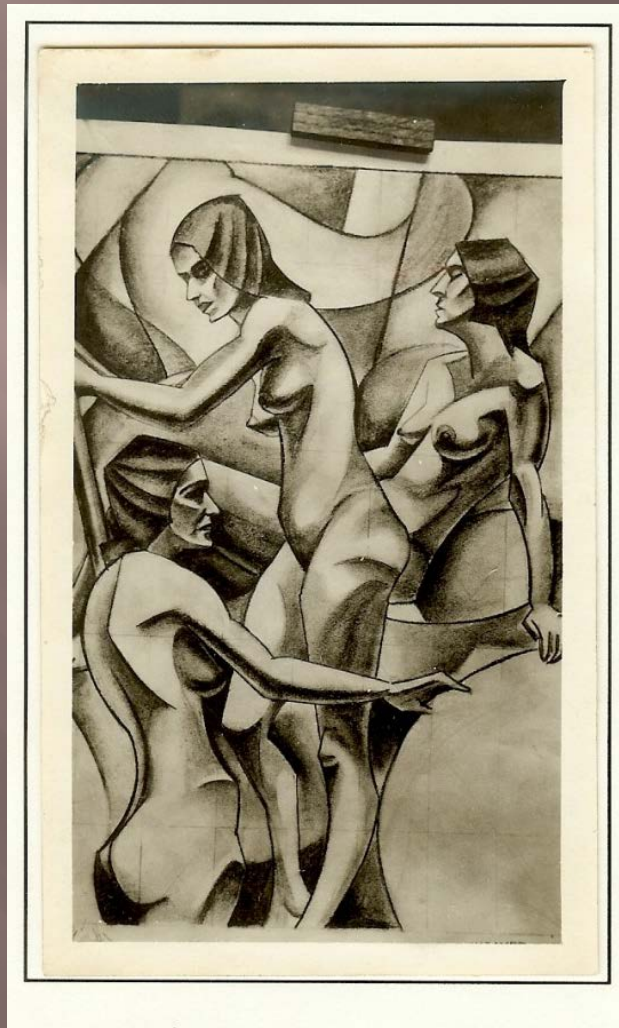


Photo of a pencil work, undated.

Part 6. The Costumed Figure



HDW0068.jpg -- 16 x 20 -- Charcoal

HDW0179.jpg -- 16 x 20 -- Charcoal

1933 Advertising Design course



HDW0069.jpg -- 16 x 20 -- Charcoal

HDW0042.jpg -- 16 x 20 -- Charcoal

1933 Advertising Design course

HDW0134.jpg

1933 Advertising Design

16 x 20 -- Charcoal

**In possession of Amy T.
Weir**

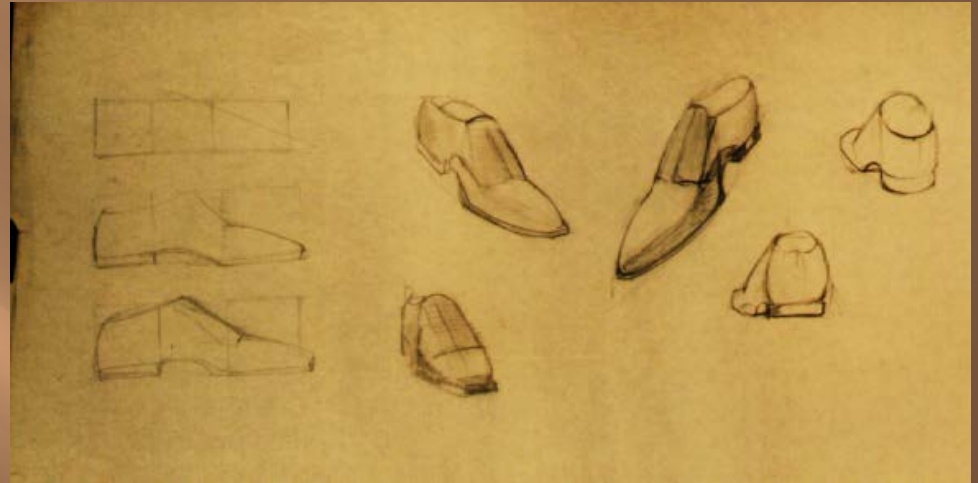
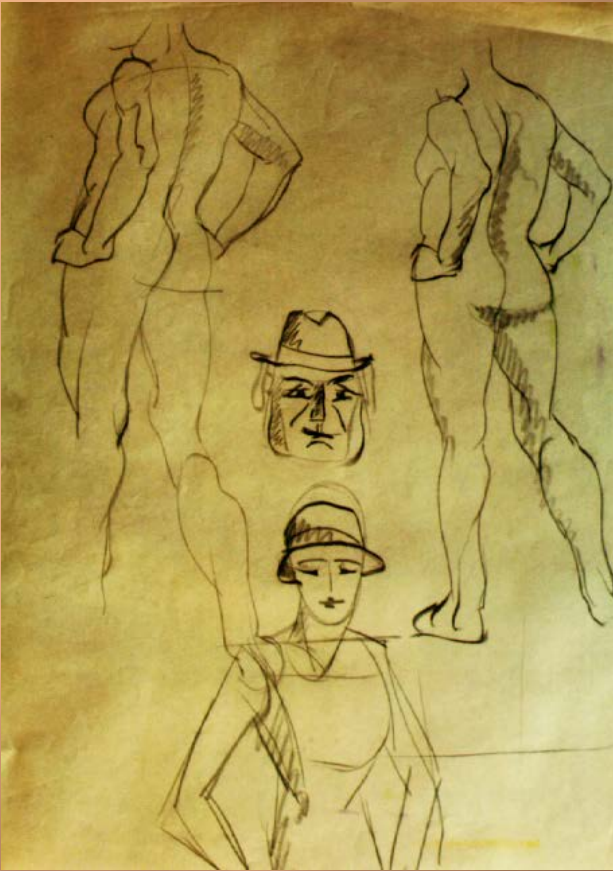




HDW0225.jpg -- 16 x 20 -- Pencil

HDW0226.jpg -- 16 x 20 -- Pencil

1933 Advertising Design course



HDW0043.jpg -- 16 x 20 -- Pencil

HDW0231.jpg -- 16 x 20 -- Pencil

1933 Advertising Design course

HDW0209.jpg

16 x 20 --

Ink and Watercolor

1933 Advertising
Design course



HDW0014.jpg

16 x 20 --

Ink and Watercolor

1933 class: The
Costumed
Figure

In possession of
Amy T. Weir.



HDW0157.jpg

12 x 15 --

Watercolor

**class: The
Costumed Figure**

**In possession of
John & Ann
Weaver.**



HDW0157.jpg

12 x 15 --

Chalk

About 1933

**Class: The Costumed
Figure**

See also:

Part 3. Portraits, slide 17

**In possession of John &
Ann Weaver. (See same
model in portrait file.)**



Part 7. Animals



HDW0256.jpg

No information is available about this painting. Possible in possession of Michelle Weaver Root family.



HDW0158.jpg

16 x 18 -- Oil on canvas

In the possession of Michelle Weaver Root family.



HDW0103.jpg

15 x 18 -- Oil on canvas

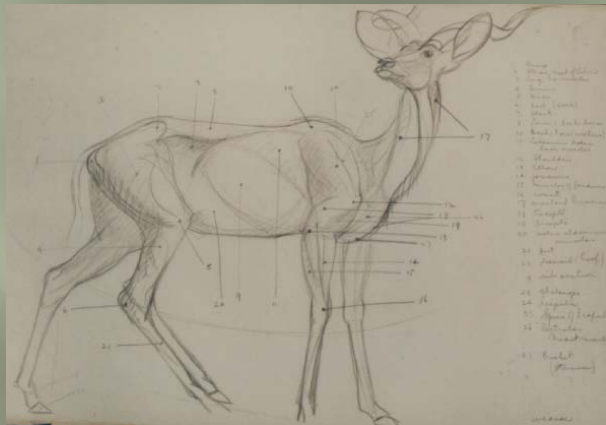
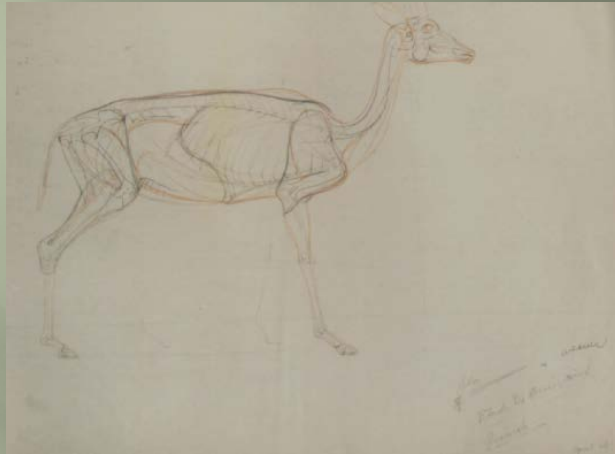
In the possession of the Shaeffer family.



HDW0139.jpg

HDW0138.jpg

Each 20 x 24 -- Pencil on newsprint -- Taken from *The Standard Library of Natural History Vol. 2* -- Classwork in the possession of Amy T. Weir.

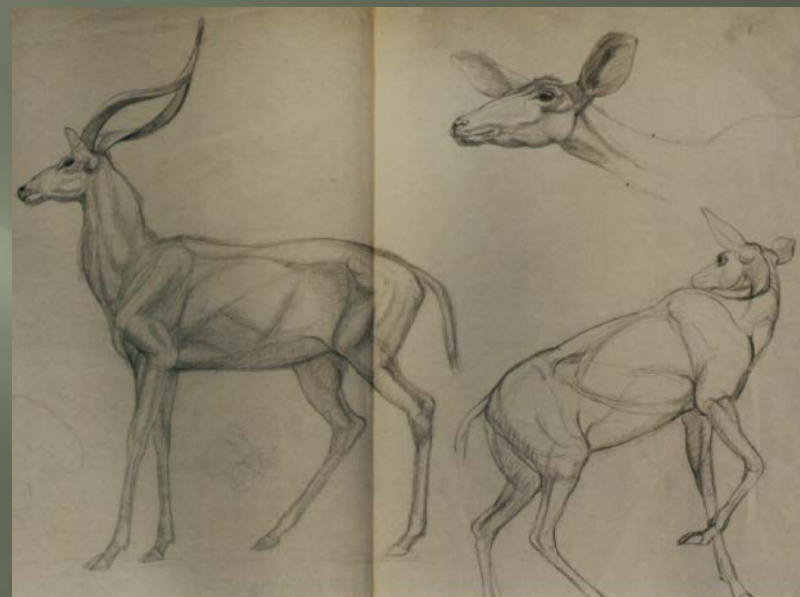
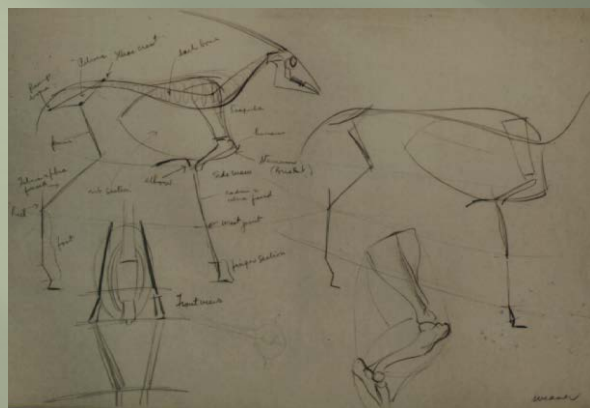


HDW0234.jpg

HDW0235.jpg

Each 20 x 24 -- Pencil on newsprint -- Classwork
in the possession of Amy T. Weir.

HDW0061.jpg



HDW0236.jpg

HDW0232.jpg

Each 20 x 24 -- Pencil on newsprint -- Classwork
in the possession of the Shaeffer family.

HDW0228.jpg

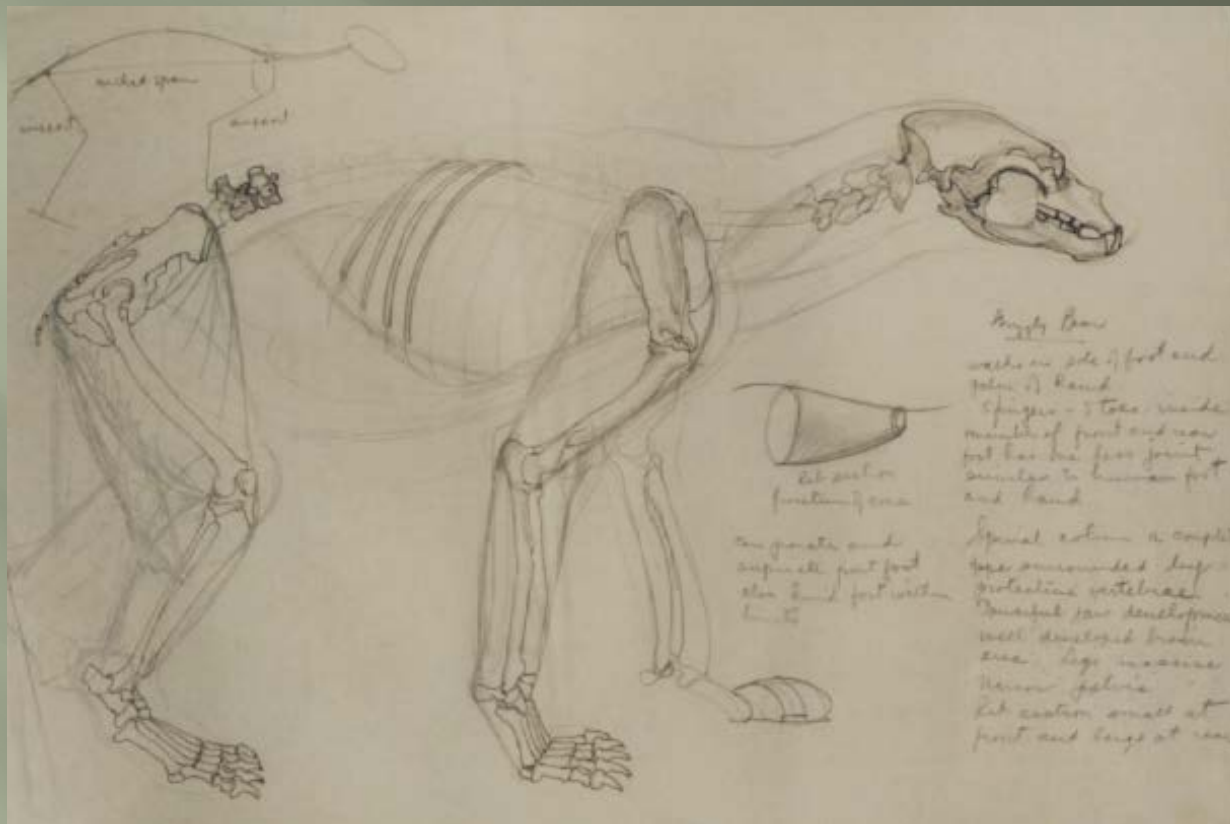


HDW0229.jpg -- 20 x 24 -- Pencil on newsprint. Text:
“Sketching from the model—Lay in first of all the anatomical structures where they belong. Then tie them together as large masses rather than isolated areas. Pelvis of cat is rather small. Keep white from glaring at you. The tail of the lion is a continuation of the spinal column, has heavy lateral muscles at base which should be stressed. Draw what you know rather than what you see.” In possession of Amy T. Weir .



HDW0233.jpg

**20 x 24 -- Pencil on newsprint -- Classwork
in the possession of the Shaeffer family.**



HDW0237.jpg -- 20 x 24 -- Pencil on newsprint . Text:
 “Grizzly Bear -- Walks on sole of foot and portion of hand; 5
 finger, 5 toes; inside member of front and rear foot has one less
 joint similar to human foot and hand. Spinal column as
 complete pipe surrounded by protective vertebrae. Powerful jaw
 development, well developed brain area; legs massive; narrow
 pelvis; rib section small at front and large at rear. Rib section
 functions as cone. Can pronate and supinate front foot, also
 hind foot within limits.” In possession of Amy T. Weir.



HDW0223.jpg -- HDW0238.jpg

Each 20 x 24 -- Pencil on newsprint -- Classwork
in the possession of Amy T. Weir.



HDW0207.jpg

20 x 24 -- Pencil on newsprint -- Classwork
in the possession of the Shaeffer family.



HDW0142.jpg -- HDW0048.jpg
Each 20 x 24 -- Pencil on newsprint -- Classwork
in the possession of Amy T. Weir.



HDW0208.jpg

20 x 24 -- Pencil on newsprint -- Classwork
in the possession of the Amy Toronto Weir.

HDW0066.jpg

**20 x 24 -- Pencil
on newsprint --**

**Classwork in the
possession of the
Shaeffer family.**





HDW0352.jpg

20 x 24 -- Pencil on newsprint -- Collage created from prints of animal sketches. In possession of E. C. Shaeffer.

Part 8. Etchings;
Primitive Art

Unless otherwise noted, the etchings are in the possession of E. C. Shaeffer or are in the Duncan Weaver art scrapbook.

Amy Toronto Weir is in possession of the original copper plates.



HDW0260.jpg -- About 1950

Each etching 2" x 6 1/2 "

Subject: Old Chief Mountain, Alberta, Canada

Several people have copies of this etching. Note gradations of intensity, depending on the application of ink. Several people have copies.



HDW0087.jpg -- About 1950

Each etching 6 x 8

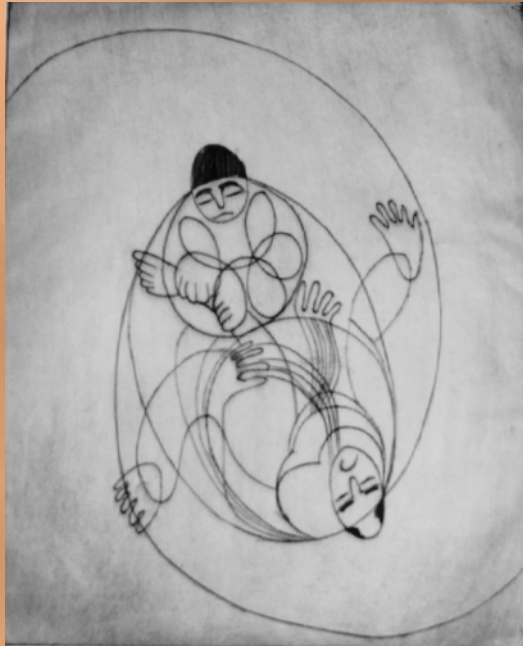
Subject: Dream sequence

In possession of E. C. Shaeffer. Original etching copper plates are in the possession of Amy Toronto Weir.



HDW0014.jpg -- HDW0015.jpg -- About 1950

Each etching 10 x 12



HDW0079.jpg -- HDW0070.jpg -- About 1950

Each etching 10 x 12

In possession of Jo Ellen Shaeffer.



HDW0072.jpg -- HDW0071.jpg -- About 1950

Etching #72 8 x 10; Etching #71 12 x 14

In possession of E. C. Shaeffer, & Amy Weir.



HDW0073.jpg -- HDW0074.jpg -- About 1950

Each etching 8 x 10

In possession of E. C. Shaeffer, Amy Weir.

HDW0080.jpg -- 7 x 10

Primitive Art 1948

“Sketch from photograph
[self]; distortion of eyes, nose,
mouth”



HDW0031.jpg -- 7 x 10

Primitive Art 1948

“Sketch from motifs using
Melanese masks”



HDW0030.jpg -- 7 x 10

Primitive Art 1948

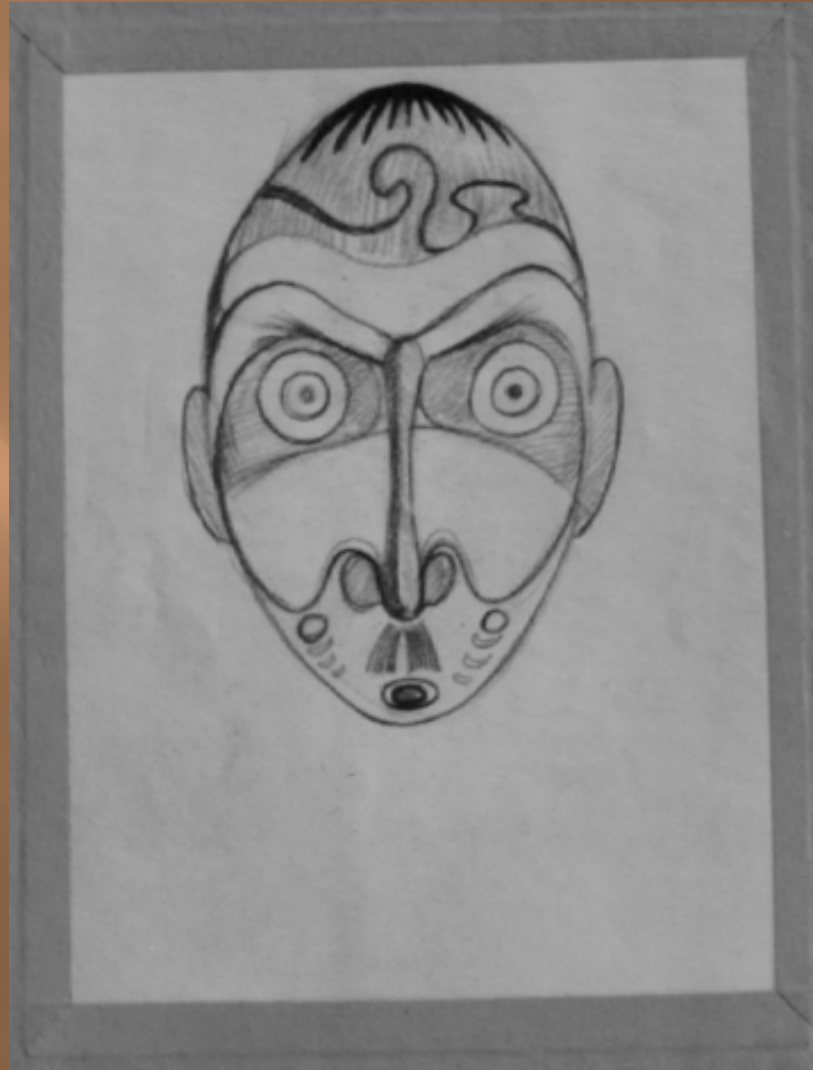
“Simplification of sketch for
lino-block self-portrait.”



HDW0032.jpg -- 7 x 10

Primitive Art 1948

“Melanesian wooden mask motif; distortion of eyes, nose, mouth, hair.”



HDW0028.jpg -- 7 x 10

Primitive Art 1948

“Pencil rubbing, lino-block
self portrait.”



HDW0029.jpg -- 7 x 10

Primitive Art 1948

“Reverse side of pencil
rubbing, lino-block, self
portrait.”



HDW0027.jpg -- 7 x 10

Primitive Art 1948

“Self -portrait, lithograph
pencil, surplus removed with
turpentine.”



HDW0094.jpg -- 7 x 10

Primitive Art 1948

"Framed and finished."

In possession of E. C. Shaeffer.
Copy held by Jo Ellen Shaeffer.



Primitive Art 1948

"Trio" Gary on the violin, top; EC in center on piano; the artist below on the cello. "We actually did play as a trio for special occasions." EC

In possession of Al & Suzy Toronto.



Part 9. Miscellaneous



HDW0181.jpg -- 1933 -- 16 x 20 -- HDW0141.jpg
In possession of Amy Toronto Weir.



HDW0224.jpg -- 8 x 10 -- Pencil preliminary

In possession of Amy Toronto Weir.



**HDW0264.jpg -- HDW0256.jpg -- Glazed cookie jar.
Ceramics 1942 course at the Art Institute of Chicago
In possession of E. C. Shaeffer**

HDW0153.jpg -- Weaver family
coat of arms

In possession of Daniel Weaver
Shaeffer.



HDW0060.jpg --

Pencil -- 16 x 20

Part of a series for son
Gary Weaver's missionary
discussions. 1951

In possession of E. C.
Shaeffer





**HDW0163.jpg -- HDW0167.jpg -- More sketches in the series
for the missionary discussions (see previous slide).**

In the possession of E. C. Shaeffer.

**HDW0086.jpg --
Block print on fabric**

**Margaret Weaver took
the block-printed fabric
and made dresses for
herself and her two
daughters.**

**In possession of E. C.
Shaeffer**



HDW0084.jpg --

Ink and watercolor

**Subject: Comic-strip
character, Brenda Starr.**

**Located in Duncan
Weaver art scrapbook.**



HDW0084.jpg --

Ink and watercolor 8 x 10

Subject: Nursery Rhyme

Little Boy Blue

Come blow your horn

The sheep's in the meadow,

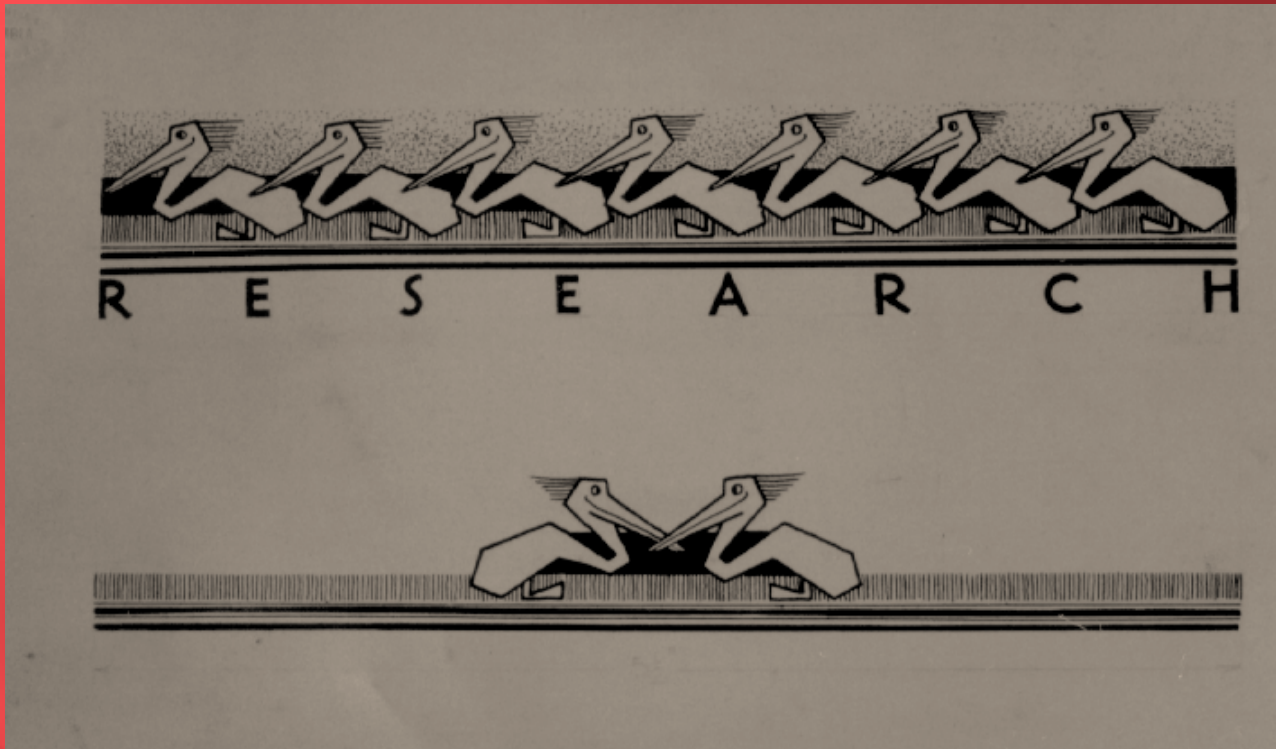
The cow's in the corn.

*O where's the boy that looks after the
sheep?*

He's under the haystack fast asleep!

In possession of E. C. Shaeffer

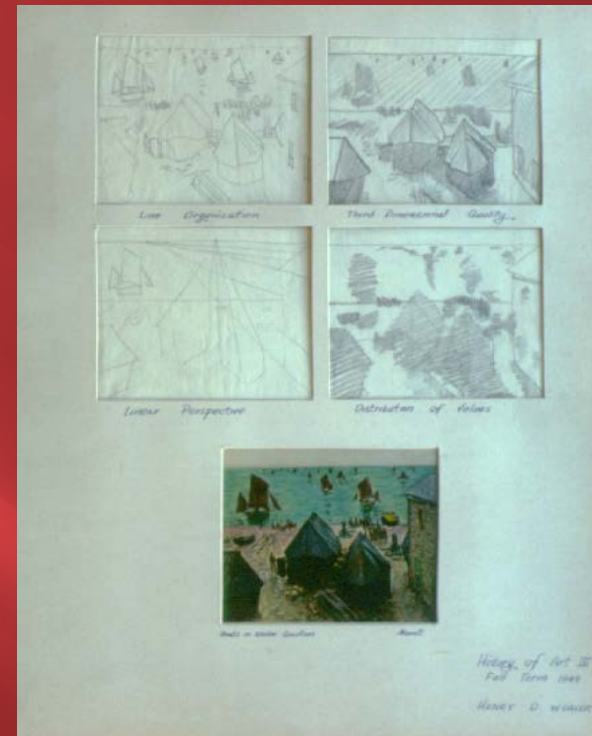
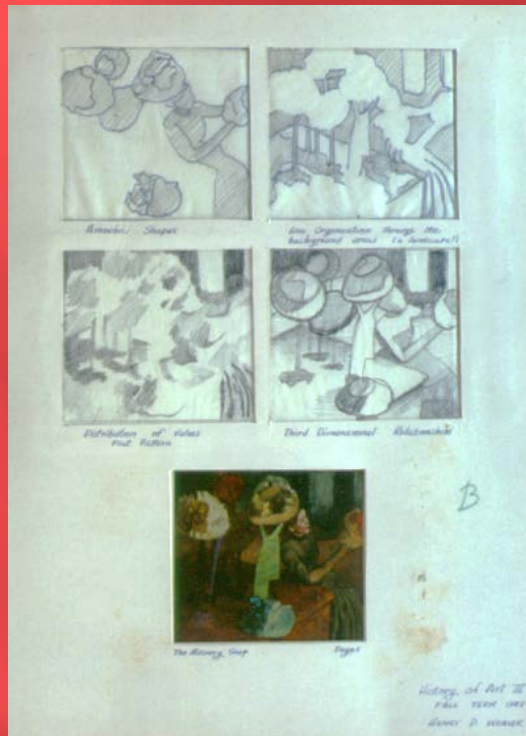




HDW0176.jpg 8 x 10

Lettering course 1930-31 The Art Institute of Chicago.

In possession of Amy Toronto Weir



HDW01052.jpg HDW0055.jpg
 History of Art -- The Art Institute of Chicago.
 Analytical studies in the style of various Old Masters.
 Located in Duncan Weaver art scrapbook.



HDW0183.jpg

History of Art 1949 - The Art Institute of Chicago

Study of Renoir painting "On the Terrace"

See Duncan Weaver art scrapbook.



GERMAN EXPRESSIONISM



FAUVISM



PRIMITIVE

HDW0277.jpg

History of Art 1949; The Art Institute of Chicago

“German Expressionism; Fauvism; Primitive”

In possession of E. Martin III and Erin Shaeffer.



POST-IMPRESSIONISM



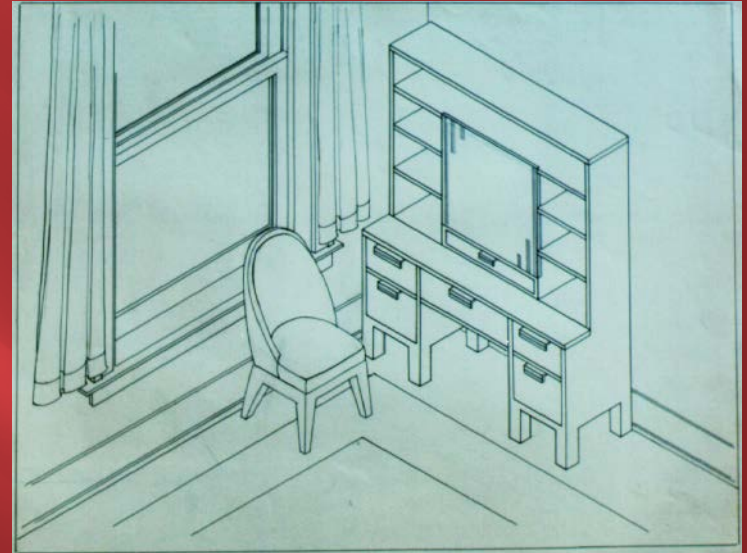
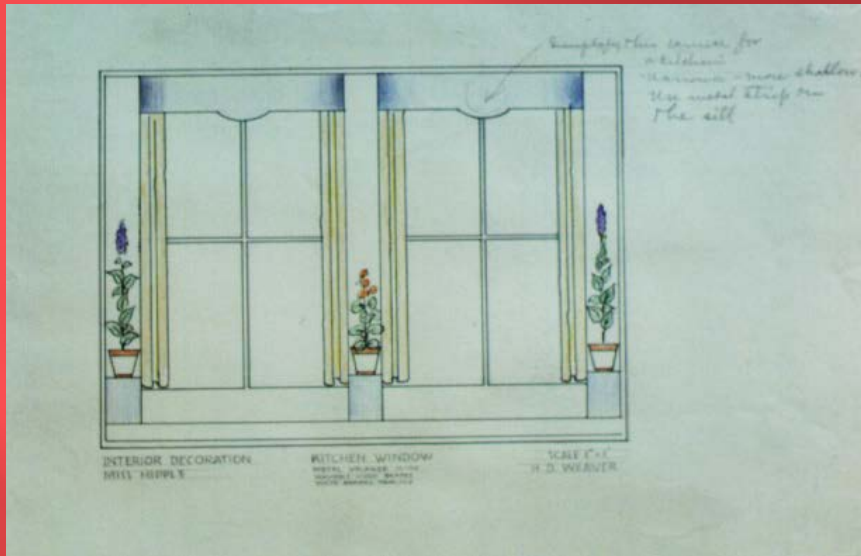
IMPRESSIONISM



PICASSO'S BLUE PERIOD

HDW0276.jpg History of Art; The Art Institute of Chicago
"Post Impressionism; Expressionism; Picasso's Blue Period"

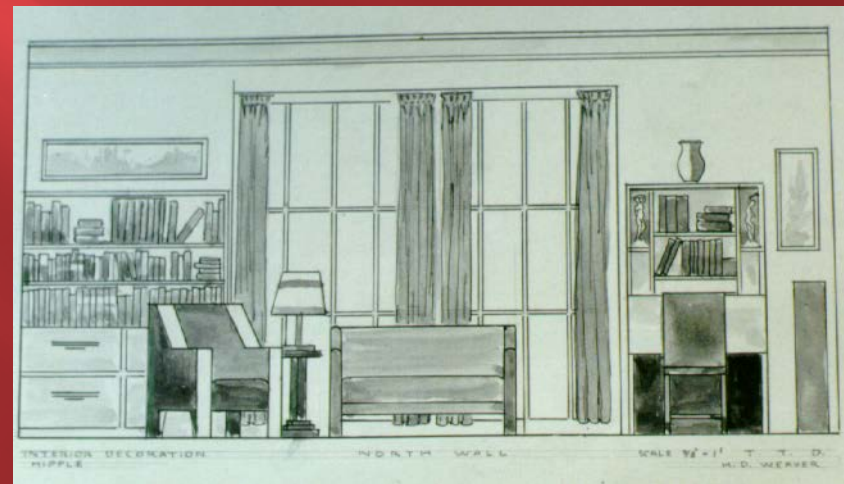
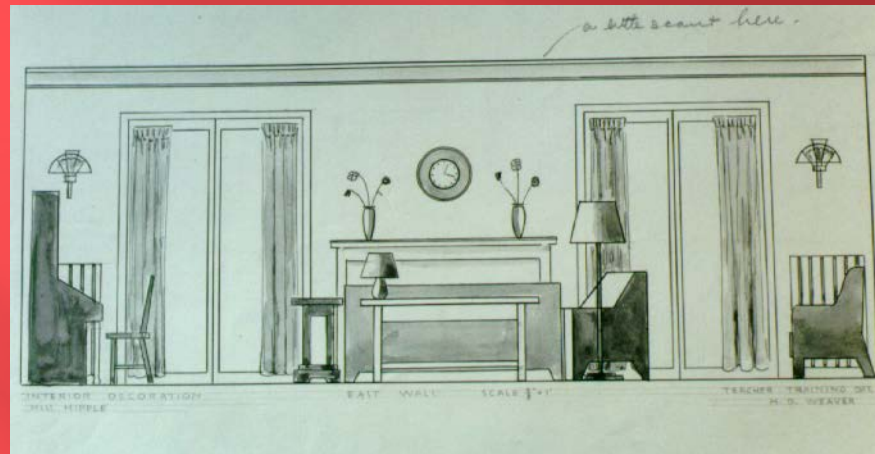
In possession of E. Martin III and Erin Shaeffer



HDW0212.jpg

HDW0213.jpg

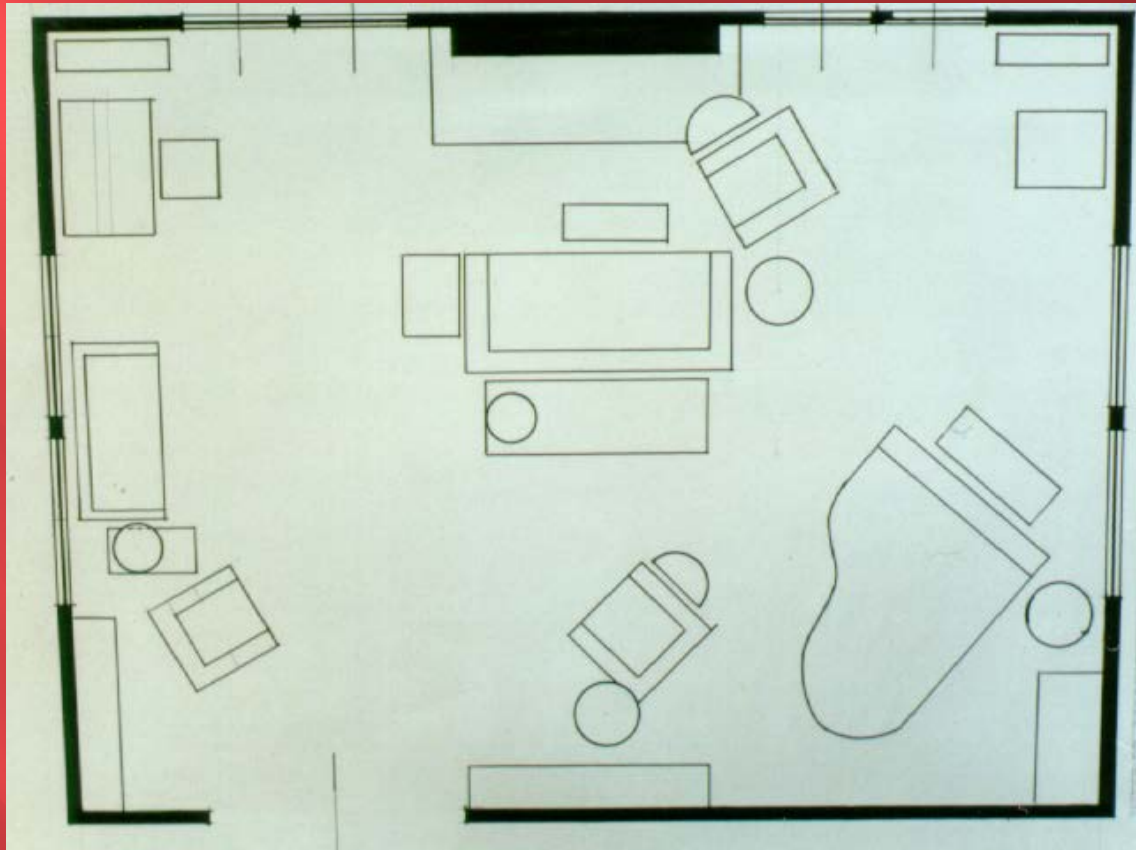
Interior Decoration 1932-33; The Art Institute of Chicago
Originals in Duncan Weaver art scrapbook.



HDW0216.jpg HDW0217.jpg

Interior Decoration 1932-33; The Art Institute of Chicago

See Duncan Weaver art scrapbook.



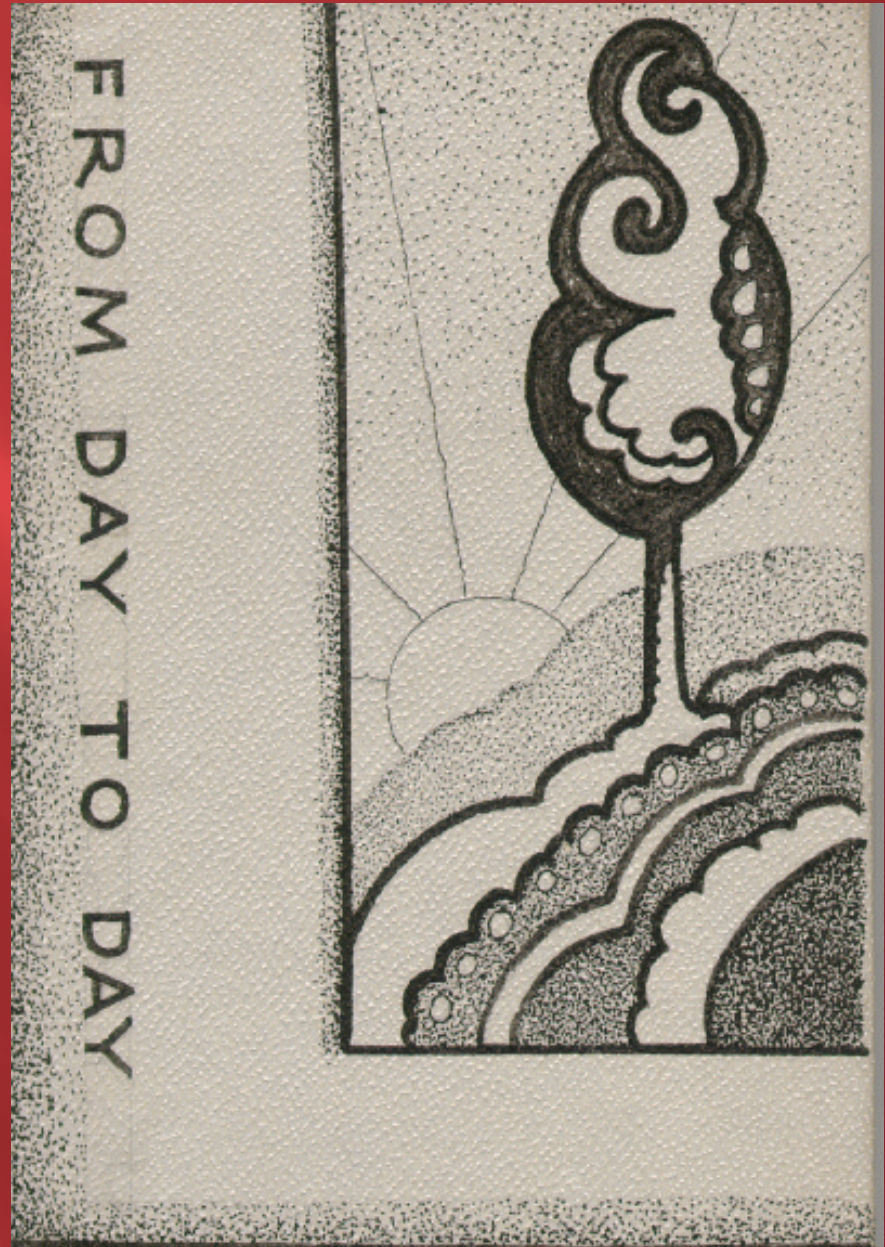
HDW0215.jpg

Interior Decoration 1932-33; The Art Institute of Chicago

See Duncan Weaver art scrapbook.

HDW0341.jpg

Small book, created for a class project.



HDW0342.jpg

Small book, created for a class project.

Fly-leaf of book.



HDW0343.jpg

Small book, created for a class project.

Title page.

FROM DAY TO DAY

THE RECORDED THOTS
AND INCIDENTS THAT
PATTERN MY LIFE.

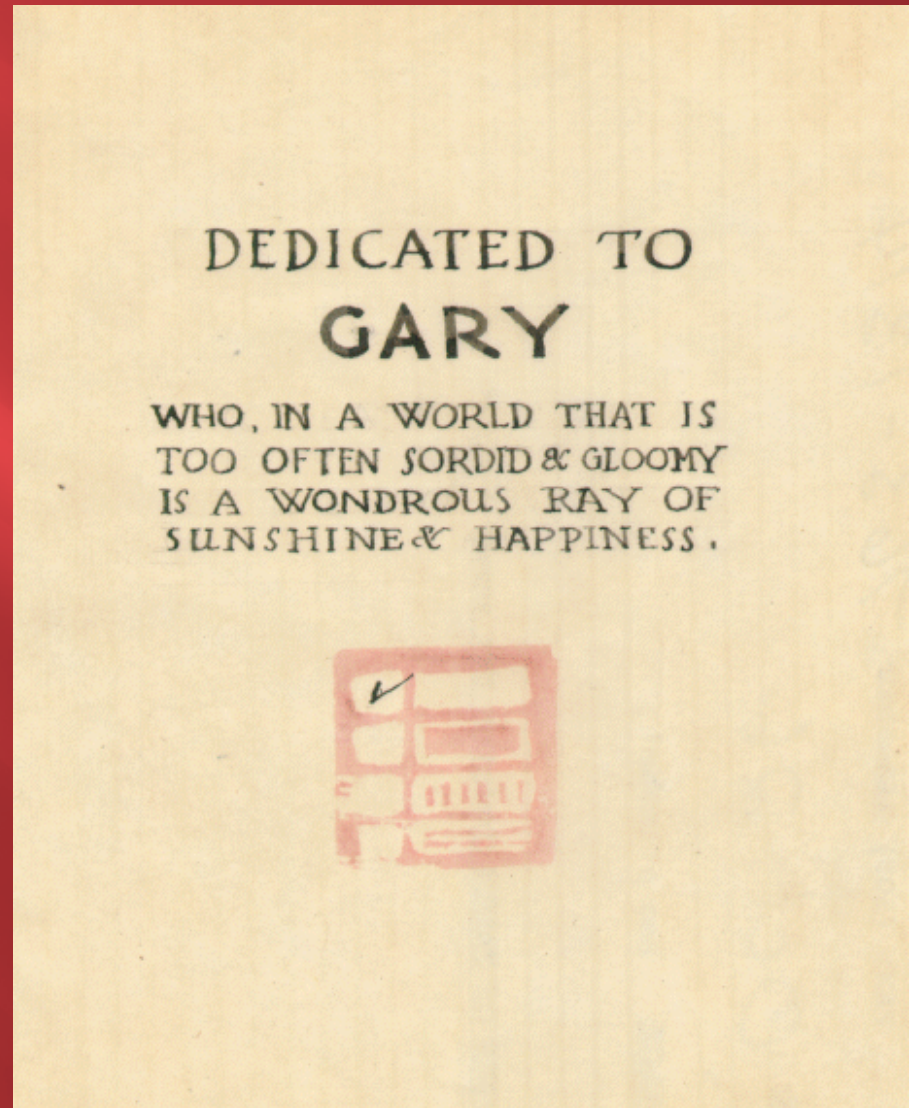


H. D. Weaver

HDW0344.jpg

Small book, created for a class project.

Page two.



HDW0345.jpg

Small book, created for a
class project.

Page three.



HDW0346.jpg

Small book, created for a class project.

Page four.



MORNING PRAYER

The day returns & brings us the petty round of irritating concerns and duties. Help us to play the man, help us to perform them with laughter and kind faces, let cheerfulness abound with industry. Give us to go blithly on our business all this day, bring us to our resting beds weary and content and undishonored and grant us in the end the gift of sleep.

ROBERT LOUIS STEVENSON.



EVENING PRAYER

Lord receive our supplication for this house family and country.

Protect the innocent, restrain the greedy & the treacherous, lead us out of our tribulation into a quiet land.

Look down upon our selves & upon our dear ones. Help us and them, prolong our days in peace & honour, Give us health, food, bright weather & light hearts. In what we meditate of evil, frustrate our wills; in what of good, further our endeavours, Cause injuries to be forgotten and benefits to be

remembered.

Let us lie down without fear and arise with exultation. For His sake in whose words we now conclude.

ROBERT LOUIS STEVENSON.



HDW0345.jpg

Small book, created for a class project.

Last pages.

HDW0351.jpg

Calligraphy by Julie Puzey
for E. C. Shaeffer as a
surprise Christmas gift,
1990.

She remembered that E.C.
had said that "Silver Bells"
was Duncan Weaver's
favorite holiday song.



City sidewalks,
busy sidewalks,

Dressed in holiday style,
In the air there's a feeling of Christmas.
Children laughing, people passing
Greeting smile after smile,
And on every street corner you'll hear,

Silver bells, Silver bells,
It's Christmas time in the City.
"Ring-a-ling," hear them ring,
Soon it will be Christmas Day!

Strings of street lights, even stop lights
Blink a bright red and green,
As the shoppers rush home with
Their treasures.

Hear the snow crunch, see the kids bunch,
This is Santa's big scene,
And above all this bustle you'll hear,

Silver bells, Silver bells,
It's Christmas time in the City.
"Ring-a-ling," hear them ring,
Soon it will be Christmas Day!

Julie Puzey